

Precision Spur Gear Slew Drive
精密直齿驱动

洛阳隆达轴承有限公司

LUOYANG LONGDA BEARING CO.,LTD

Add: No. 5 Chaoyang Road, Yiyang Bearing Industry Zone, Luoyang City, Henan Province, China PRC.

地址: 中国洛阳宜阳产业集聚区轴承专业园朝阳路5号

Tel: +86 379-6305 9696 (国内inland)

Tel: +86 379-6305 9698 (国际international)

Web: <http://www.ldb-bearing.com>

E-mail: Tony@ldb-bearing.com

WhatsApp: +86 139 3882 1203



微信/WeChat



WhatsApp

2024年11月第1版

洛阳隆达轴承有限公司

LUOYANG LONGDA BEARING CO.,LTD



目 录 CATALOGUE

一、企业简介 Company Profile	P/01
二、资质证书 Qualification Certificate	P/02
三、生产加工 Production And Processing	P/03
四、产品介绍 Product Introduction	P/04
五、检测设备 Checkout Equipment	P/05
六、产品应用 Product Application	P/06
七、直齿驱动安装使用说明 Spur Gear Slew Drive Installation And Usage Instructions	P/09
八、SG-I系列 SG-I Series	P/17
九、SG-M系列 SG-M Series	P/26
十、SG-H系列 SG-H Series	P/34
十一、特殊定制 Special Customization	P/43

【企业简介】

Company Profile

洛阳隆达轴承有限公司成立于1999年，位于洛阳市宜阳轴承产业集聚区，占地23亩。公司秉承“精心制造、服务全球”的企业愿景，经过20年的发展，成为了一家专业研发生产转盘轴承(回转支承)和回转驱动的企业。

产品广泛应用于自动化控制、智能机器人、特种车辆、机床回转台、林业机械、起重机械、抓斗机、属具、翻转机构等领域。

我们的产品远销全球71个国家和地区，并与德国、意大利、美国等国家的客户建立了长期的贸易合作关系。

公司先后荣获高新技术企业、市级企业研发中心、河南省科技型中小企业、河南电子商务企业、中原股权交易中心展示企业等荣誉称号，并通过了TUV SUD ISO9001: 2015质量管理体系认证。

隆达轴承紧紧围绕“做世界知名转盘轴承制造商”这一总体发展思路，加快企业转型升级和跨越发展，全力推动企业向创新驱动型、绿色低碳型、智能制造型方向发展。

Luoyang Longda Bearing Co., Ltd. was founded in 1999, is located in Yiyang bearing industry zone, Luoyang city covers an area of 23 mu. company adhering to the "Manufacture Elaborately sewe the world" corporate vision, after 20 years of development, the company has become a professional research, development and production of slewing bearing (slewing ring) and slewing drive enterprise.

The product is widely used in fields such as automation control, intelligent robots, special vehicles, machine tool rotary tables, forestry machinery, lifting machinery, grab machines, appurtenance, flipping mechanisms, etc.

Our products have been exporting to 71 countries and regions we have established long-term trade cooperative relations with many customers in Germany, Italy, America, etc.

The company has successively won the honorary titles of high-tech enterprise, city-level enterprise R & D center, Henan science and technology small and medium-sized enterprise, Henan e-commerce enterprise, Zhongyuan equity trading center display enterprise, etc. We also passed TUV SUD ISO9001: 2015 quality management system certification.

LDB closely focuses on the overall development idea of "To be the world famous slewing bearing manufacturer", speed up the transformation and upgrading of enterprise and leapfrog development, fully promotes the development of enterprise towards innovation-driven, green and low-carbon and intelligent manufacturing.



【资质证书】

Qualification Certificate

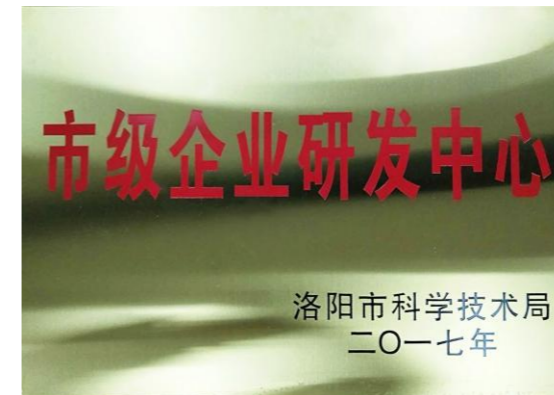
LDB® SLEW DRIVE



NEW HIGH-TECH ENTERPRISE



HENAN SMALL AND MEDIUM-SIZED SCI-TECH ENTERPRISE



MUNICIPAL ENTERPRISE R&D CENTER



LETTER OF PATENT



ISO CERTIFICATE



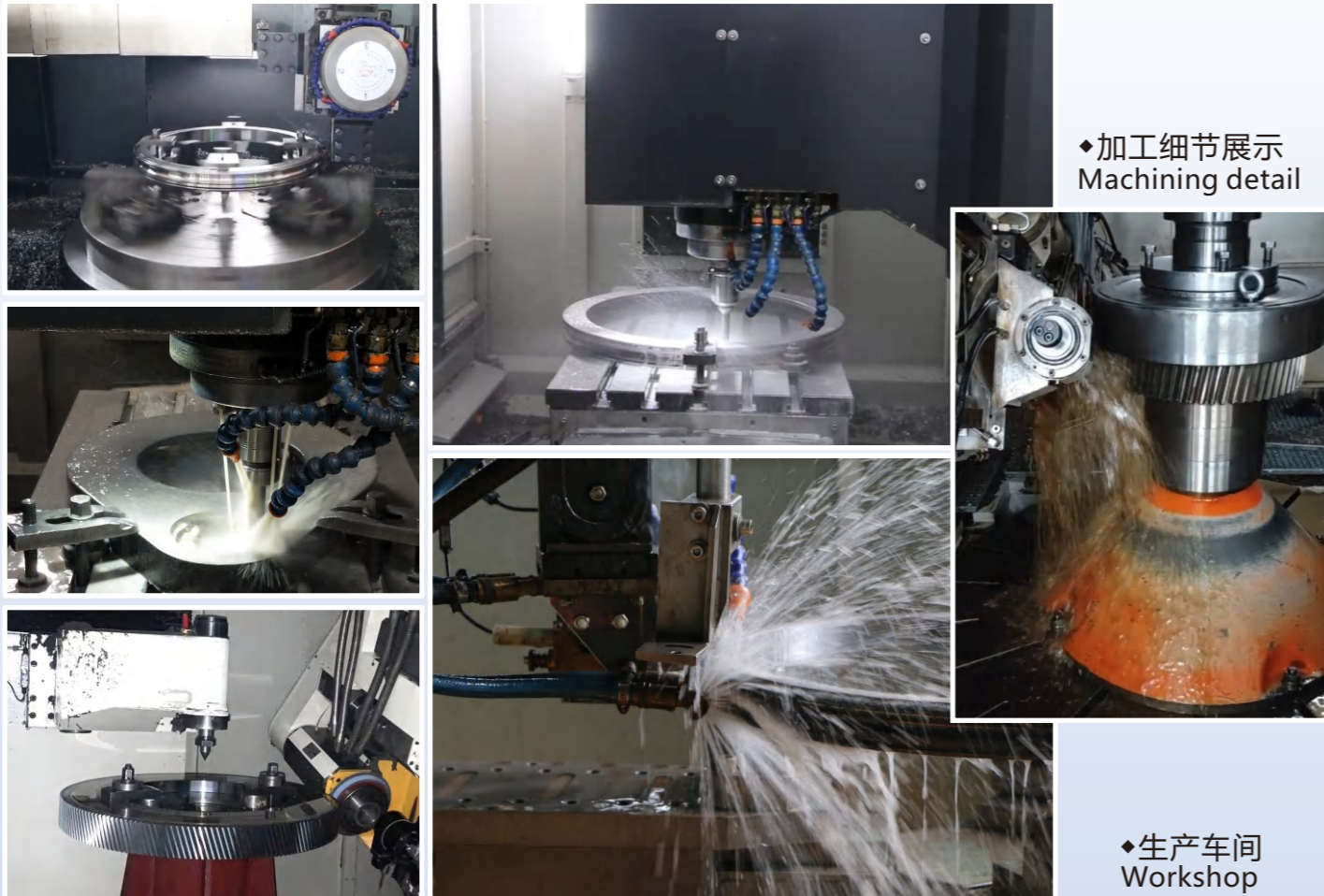
LDB TRADEMARK



INVENTION PATENT

【生产加工】

Production And Processing



◆加工细节展示
Machining detail

◆生产车间
Workshop



【产品介绍】

Product Introduction

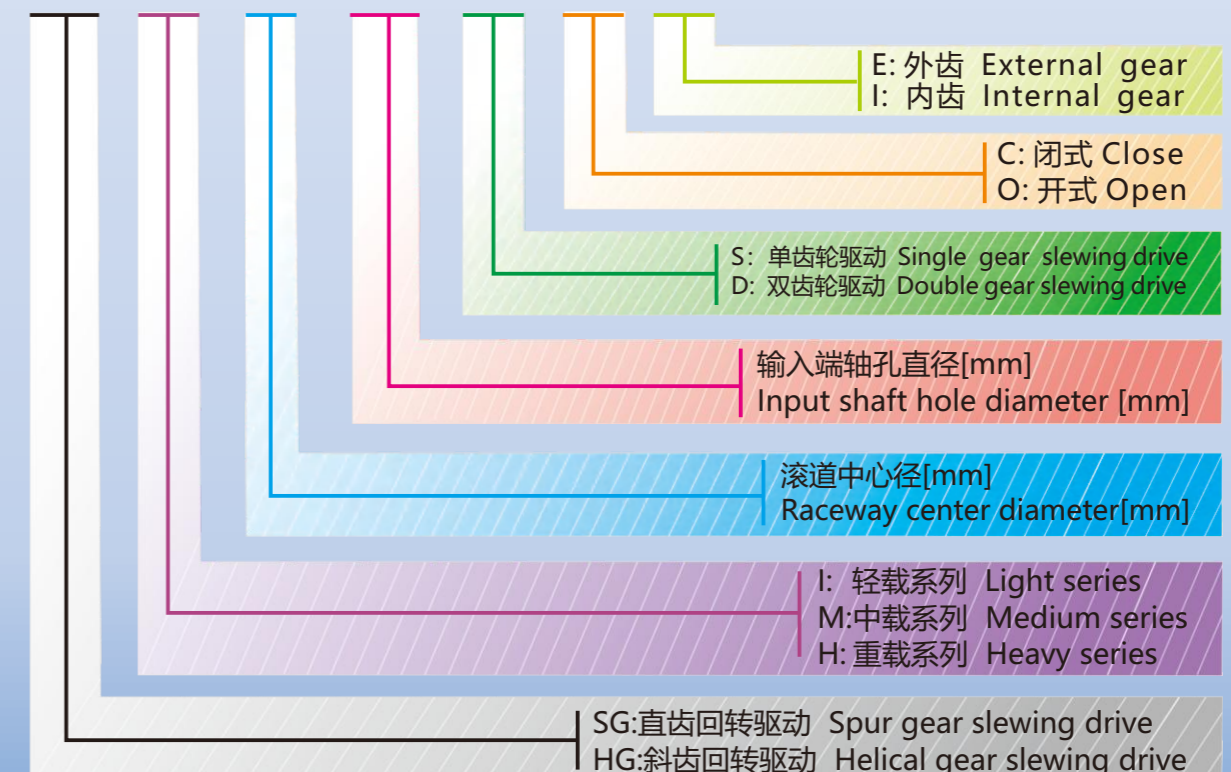
- 【1】替代内、外齿转盘轴承加小齿轮结构，紧凑型设计有效节省安装空间，易于集成到现有的应用单元中。
- 【2】传动效率高，转速快。
- 【3】能承受轴向载荷，径向载荷，倾覆力矩。
- 【4】全防护设计能有效延长使用寿命，降低维护成本，提高操作人员安全性，防护等级达到IP65。
- 【5】外观干净整洁。
- 【6】根据不同工况，有三种系列可供选择，并可快速定制化设计。

- [1] Replace the structure of slewing bearing with internal gear I external gear with pinion, the compact design can effectively save installation space and be easily integrated into existing application units.
- [2] High transmission efficiency and high rotation speed.
- [3] Can withstand axial load, radial load and tilting moment.
- [4] The full protection design can effectively extend the service life, reduce the maintenance cost, improve the safety of operators and the protection grade can reach IP65.
- [5] Appearance clean and tidy.
- [6] According to different working conditions, there are three series models to choose and can quickly make customized design.

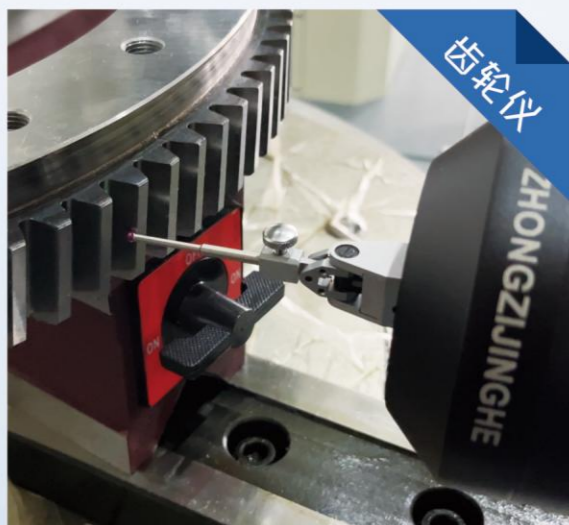
【编号说明】

Code Description

SG - I - 0229 - 25 - S - C - E



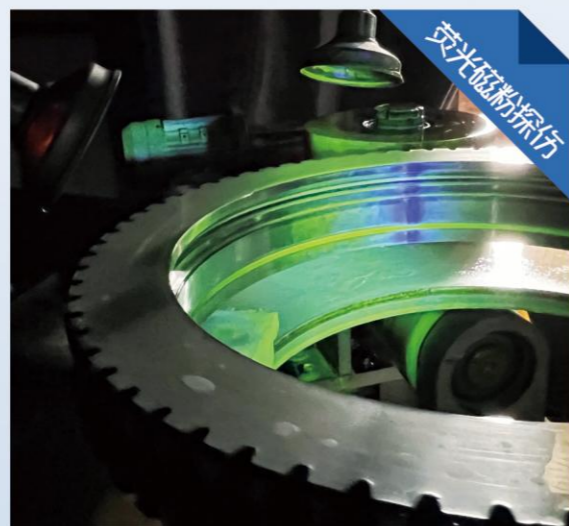
【检测设备】
Checkout Equipment



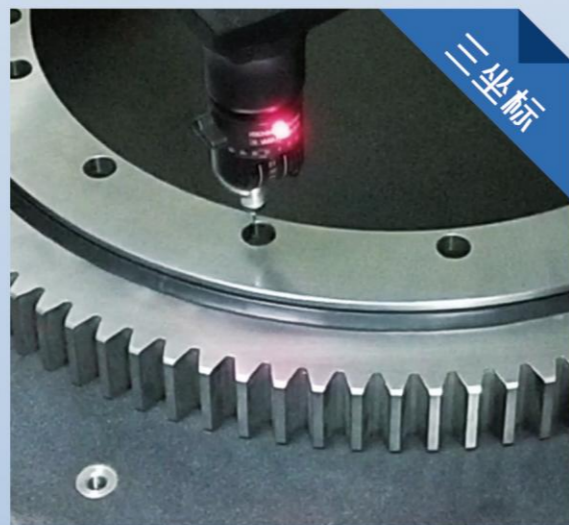
GEAR TESTER DETECTION



ENGAGEMENT DETECTION

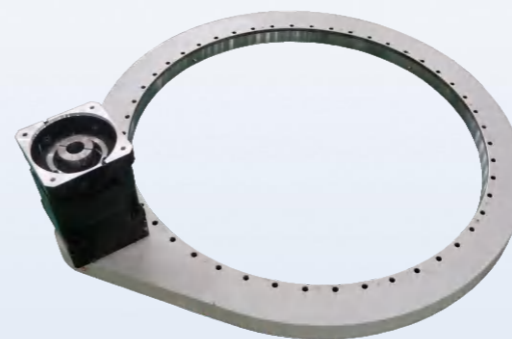


FLUORESCENT MAGNETIC PARTICLE INSPECTION



THREE COORDINATE DETECTOR

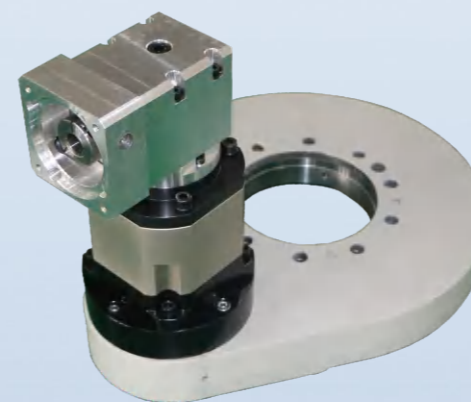
【产品应用】
Product Application



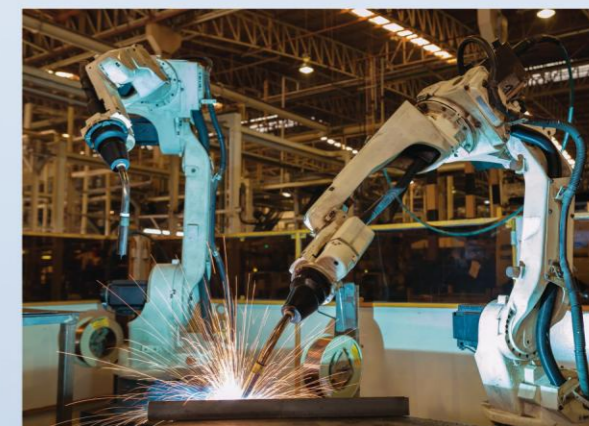
【SG-M-1091】



◆ 建筑3D打印 Architectural 3D printing



【SG-I-0229】



◆ 焊接机器人 Welding robot

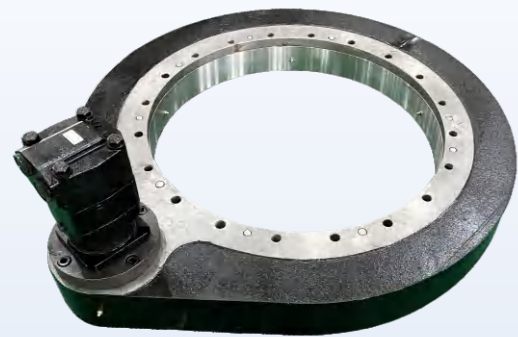


【SG-M-0311】



◆ 码垛机器人 Palletizing robot

【产品应用】
Product Application

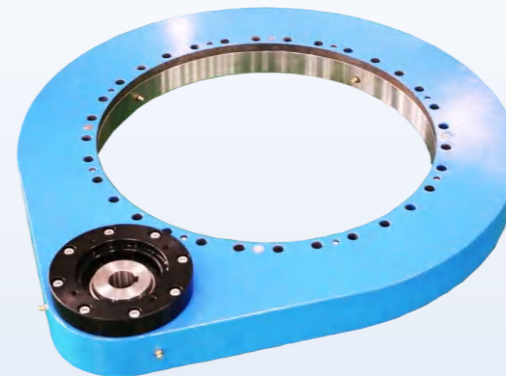


【SG-H-0900】



◆属具 Attachments

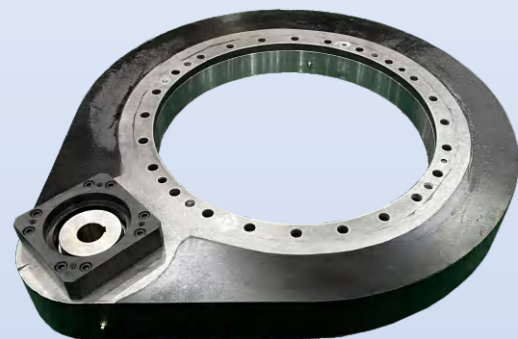
【产品应用】
Product Application



【SG-M-0541】



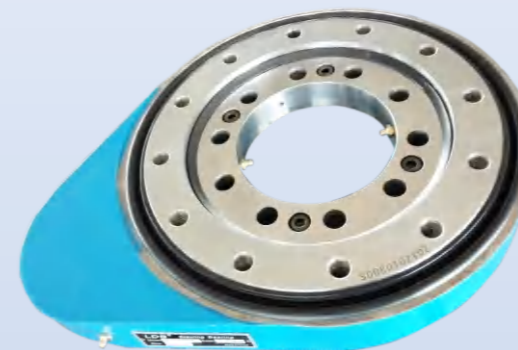
◆机床回转台 Machine tool rotary table



【SG-H-0655】



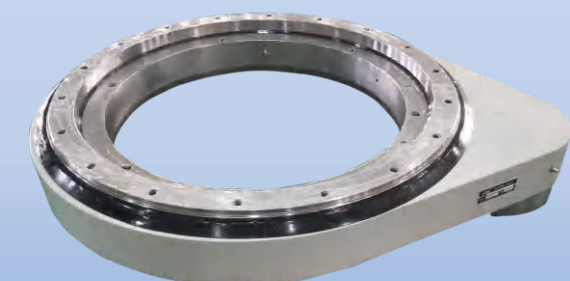
◆自动化设备 Automation equipment



【SG-I-0229】



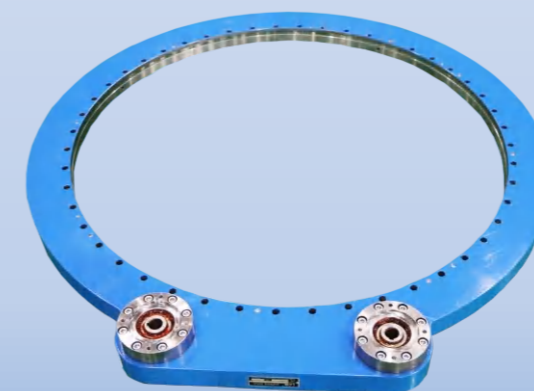
◆抓草机 Grass grabbing machine



【SG-M-0641】



◆汽车吊 Truck crane



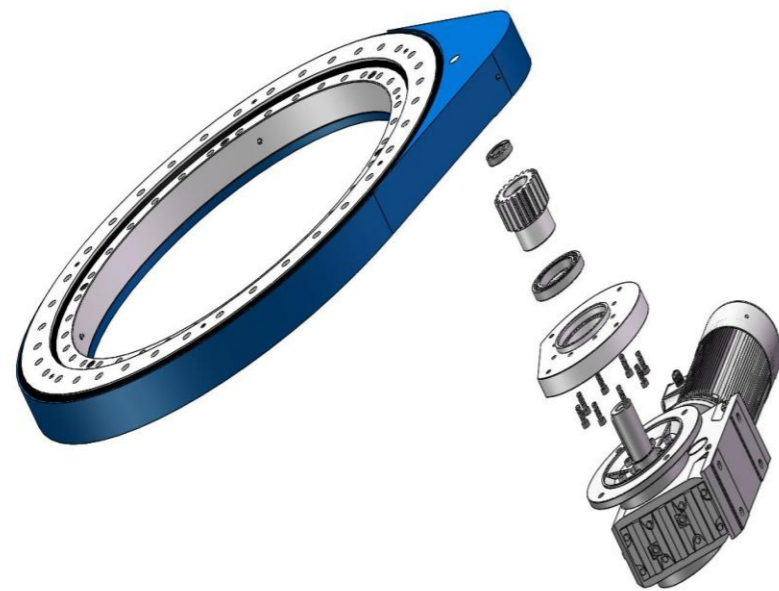
【SG-I-1091】



◆雷达车 Radar vehicle

直齿驱动安装使用说明

Spur Gear Slew Drive Installation And Usage Instructions



由右下角依次为：减速机-连接法兰-承载轴承-小齿轮-承载轴承-壳体-回转支承。

From the lower right corner are: Reducer - Connecting flange - Carrier bearing - Pinion - Carrier bearing - Housing - Slewing bearing

安全提示：

此文档包含直齿驱动安装和维护时所需的信息，请由专业人员进行操作，避免安装出错或造成意外伤害，如安装过程出现技术问题，请根据封面各联系方式与本公司联系。

Safety attention:

This document contains the information required for the installation and maintenance of the spur gear slew drive. Please use professional personnel to avoid installation errors or accidental injuries. If there is a technical problem during the installation, please contact our company according to the contact information on the cover of the instruction.

一、运输、搬运、贮藏

1. 运输时请保持直齿驱动的包装箱按规定方向放置，避免碰撞；移动时请带上防护手套谨慎操作；直齿驱动一般外圈都有螺纹孔，可以保证能够利用吊装设备安全搬运。

2. 贮藏时请保持直齿驱动包装箱按规定方向放置，存放于密封房间，避免潮湿，在完整的封闭包装中，产品表面上的防腐蚀、防锈大约可保持4-6个月。

I. Transport, handling, storage

1. During transportation, please keep the straight tooth driven packing box placed in the specified direction to avoid collision. Please wear protective gloves when moving. Generally, the outer ring of the spur gear slew drive has threaded holes, which can ensure that it can be safely carried by the lifting equipment.

2. When storing, please keep the spur gear slew drive packing case placed in the specified direction and stored in sealed Room, avoid moisture, in a complete closed package, the corrosion and

rust prevention on the surface of the product can be maintained for about 4-6 months.

二、安装前的准备

1.安装前的准备:

- ①.打开直齿驱动包装, 检查合格证和标牌确认产品型号。
- ②.清理支承面上的杂质 (如铁屑、毛刺、油漆、焊渣等)。

2.清洗液的注意事项:

用清洗液 (柴油、汽油等) 清洗安装面或直齿驱动外部时, 清洗液不能对橡胶密封件的性能产生影响; 请根据清洗液的特性对工作人员做好防护。

II.Preparation before installation

1.Preparation before installation

- ①.Open the packaging of the spur gear slew drive, check the product certificate and label to confirm the product model.
- ②.Clean impurities (Such as iron filings, burrs, paint, welding slag,etc.) from the supporting surface

2.Precautions for cleaning agent:

When cleaning the mounting surface or the outside of the straight gear drive with cleaning agent (diesel,gasoline, etc.), the cleaning agent should not affect the performance of the rubber seal.Protect personnel according to the characteristics of the cleaning agent.

三、螺栓的选择:

直齿驱动包装发货时不包含装配螺栓, 以下内容提供参考:

III.Bolt selection

The spur gear slew drive is delivered without assembly bolts. The

following information is for reference

螺栓规格 Bolt specification	拧紧力矩 (N.m) Tightening moment			螺栓规格 specification	拧紧力矩 (N.m) Tightening moment		
	8.8 级 grade	10.9 级 grade	12.9 级 grade		8.8 级 grade	10.9 级 grade	12.9 级 grade
M4	2.25	3.31	3.87	M16	168	246	288
M5	4.16	6.77	7.92	M18	229	336	394
M6	7.8	11.5	13.4	M20	327	481	562
M8	19.1	28	32.8	M22	450	661	773
M10	38	55.8	65.3	M24	565	830	972
M12	66.5	97.7	114	M27	837	1230	1439
M14	107	156	183	M30	1131	1661	1944

注意事项:

- 1.请正确选用螺栓的规格、型号及性能等级。
- 2.螺栓级别不低于 8.8 级。
- 3.螺栓旋入螺纹孔长度一般为 2 倍螺栓公称直径。
- 4.不允许螺栓旋出螺纹孔之外, 否则会引起干涉, 损坏等。
- 5.若超出允许安装面的接触应力, 请合理使用高强度的垫圈。

Note:

1. Select the correct bolt specifications, models and performance grades.
2. The bolt level is not lower than 8.8.
3. The length of the bolt threaded hole is generally 2 times the nominal diameter of the bolt.
4. Do not allow the bolt to screw out of the threaded hole, otherwise it may cause interference, damage, etc.
5. If the contact stress of the mounting surface is exceeded, use a high-strength gasket.

四、直齿驱动的安装:

请遵循以下程序, 以避免螺栓拧紧时产生的内应力及安装问题。

1. 在螺纹处添加螺纹紧固胶水。
2. 预紧螺栓及垫圈, 应交叉拧紧; 从内圈或外圈开始, 将所有螺栓按照对角顺序扭紧至 30% 拧紧力矩, 然后重复对角顺序扭紧至 50% 拧紧力矩, 最后重复对角顺序扭紧至 100% 拧紧力矩。
3. 安装螺栓上紧上全, 如遇到结构限制不能上全螺栓时, 则空出的螺栓孔必须做密封处理, 如填满硅胶等, 否则会漏水和灰尘颗粒到直齿驱动内部。
4. 安装螺栓应考虑到螺纹啮合长度, 不宜过长, 否则将影响回转支承转动或引起干涉。
5. 螺栓拧紧后, 请在螺栓头和其连接处划线做标记, 便于以后检查螺栓是否松动。

iv. Installation of spur gear slew drive:

Please follow the procedure below to avoid internal stress and installation problems caused by bolt tightening.

1. Add thread fastening glue to the thread.
2. Pre-tightening bolts and washers should be tightened cross-securely; Starting with the inner ring or outer ring, tighten all bolts in diagonal sequence to 30% tightening torque, then repeat diagonal sequence to 50% tightening torque, and finally repeat diagonal sequence to 100% tightening torque.
3. Tighten the bolt. If the bolt cannot be fully mounted due to structural limitations, the empty bolt holes must be sealed, such as filled with silicone, otherwise water leakage and dust particles will enter the inside of the straight tooth drive.
4. The mounting bolt should take into account the length of the mesh of the thread and should not be too long, otherwise it will affect the rotation of the slewing support or cause interference.
5. After the bolt is tightened, mark the bolt head and its connection to check whether the bolt is loose.

五、直齿驱动的润滑:

产品出厂前已对重要部位进行润滑, 正常加注 EP2 润滑脂, 请在安装和后期维护时根据实际情况决定是否再加入润滑脂。

1. 回转支承滚道, 出厂前已加注润滑脂。
2. 齿轮与回转支承啮合处, 出厂前已加注润滑脂。
3. 支撑齿轮和法兰的承载轴承, 出厂前已加注润滑脂。

V. Lubrication of spur gear slew drives:

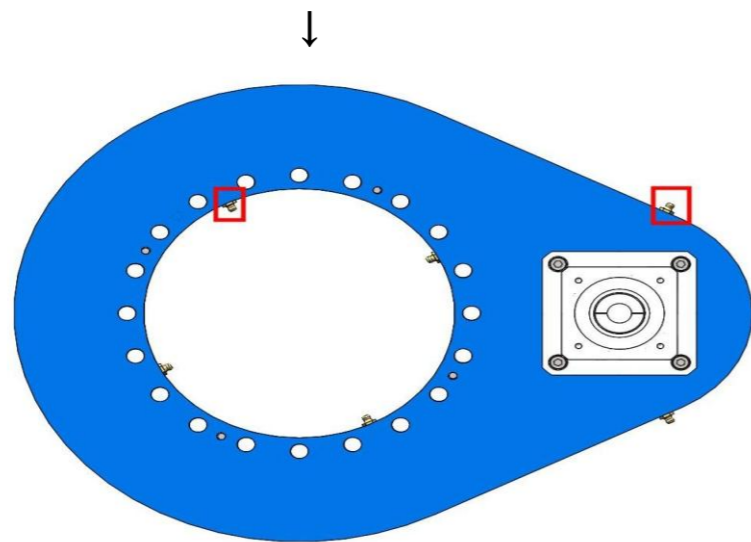
Important parts of the product have been lubricated before delivery, and EP2 grease is normally added. Please decide whether to add more grease during installation and subsequent maintenance based on the actual situation.

1. Slewing bearing raceway has been filled with grease before delivery.
2. The meshing area between the gear and the slewing bearing has been

filled with grease before delivery.

3. Bearing for supporting gears and flanges, greased before delivery.

六、直齿驱动润滑脂加注口位置、推荐加注间隔：红框内标识



1.回转支承的润滑脂加注口在内圈内径上，根据不同大小的规格，加注口的数量一般为 2-6 个。

2.小齿轮啮合处的润滑脂加注口在壳体一端的两侧面上，加注口的数量一般为 2 个。

3.再润滑间隔时间主要取决于当前的工作环境和条件，在没有可参照的情况下，以下内容提供参考：

Vi.Spur gear drive grease filling port location and recommended filling interval:“ Vi” marked in the red Box.

1.The grease filling port of the slewing bearing is on the inner diameter of the inner ring.Depend on the size of the specification,the number of filling ports is generally 2-6.

2.The grease filling port at the mesh of the pinion is on both sides of one

end of the housing, and the number of filling ports is generally 2.

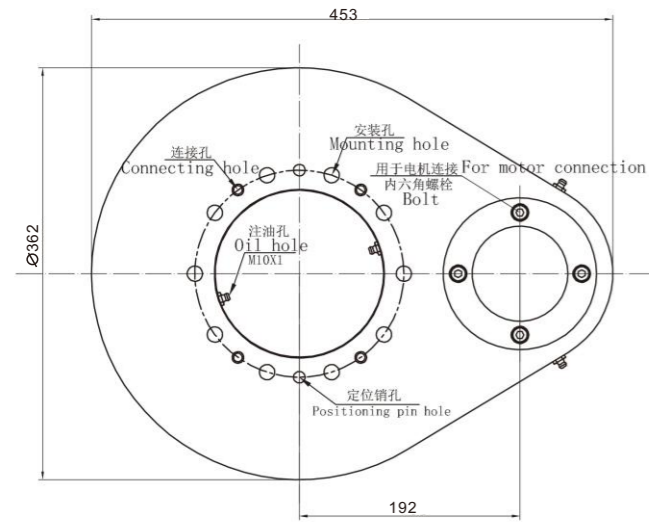
3.The re-lubrication interval mainly depends on the current working environment and conditions,in the absence of reference,the following is provided for reference:

工 作 条 件 Working condition	再加注时间 Refill time
车间、工业定位器 (转台、机器人等) Workshop, industrial positioner (turntable, robot, etc.)	每年一次 Once a year
野外恶劣工况 (起重机、风力装置、太阳能装置及高空作业平台等) Harsh working conditions in the wild (cranes, wind power installations, solar installations and aerial work platforms, etc.)	每年一次 Once a year
恶劣气候条件, 海上、沙漠、极地气候、脏乱环境或每周连续工作超过 70 小时 Harsh weather conditions such as at sea, in deserts, in polar climate,in dirty environment or when working continuously more than 70 hours per week	6 个月一次 Once every 6 months
极端条件下 (掘进机、钢厂、油田) Extreme conditions (roadheaders, steel mills, oil fields)	2 个月一次 Once every 2 months

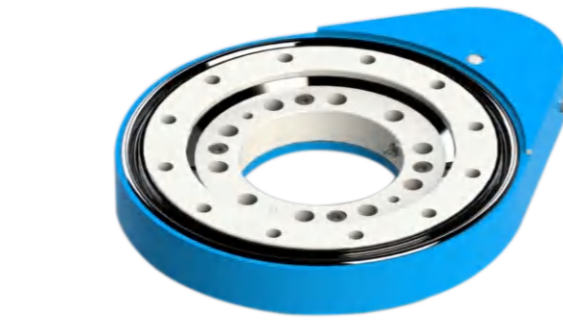
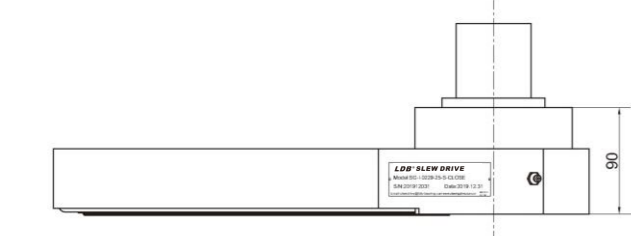
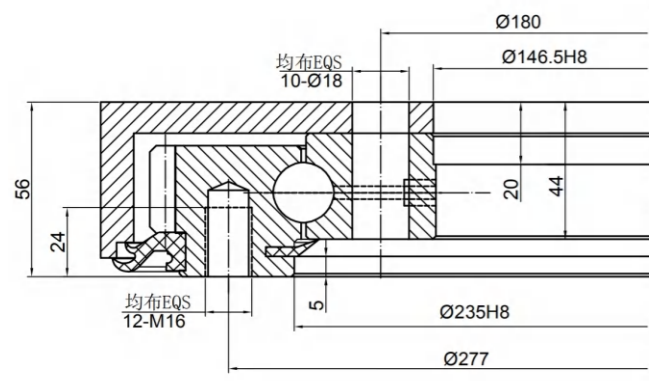
【SG-I系列】

SG-I Series

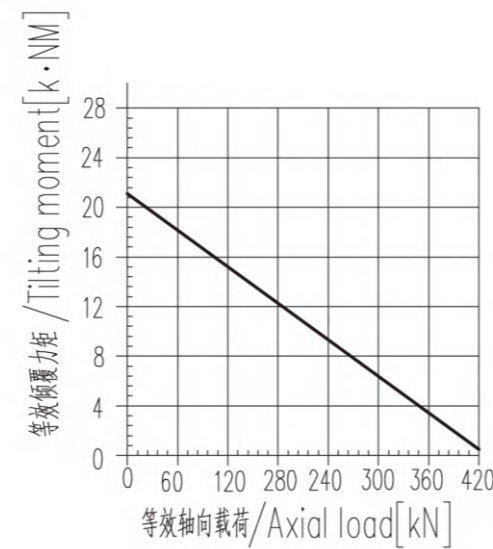
【SG-I-0229】



回转驱动的润滑
Lubrication of slewing drive
内径上有2个M10X1的注油嘴
2 M10X1 grease nipples on the inner ring
壳体两侧边有2个M8X1的注油嘴
2 M8X1 grease nipples on the housing
回转驱动应预先润滑
Slewing drive supplied pre-lubricated



模数/Module	m	[mm]	4
齿圈齿数/Teeth number of wheel	z2	[-]	81
小齿轮齿数/Teeth number of pinion	z1	[-]	15
总传动比/Overall gear ration	i	[-]	5.40
最大扭矩/Max torque SFS=1.75	Md max	[Nm]	2852
标准扭矩/Nom torque SF=1 at n=5rpm	Md nom	[Nm]	2476
最大保持扭矩/Max holding torque	Mh	[Nm]	2852
径向额定静载荷/Radial static load	Co rad	[kN]	151
轴向额定静载荷/Axial static load	Co ax	[kN]	439
径向额定动载荷/Radial dynamic load	C rad	[kN]	143
轴向额定动载荷/Axial dynamic load	C ax	[kN]	168
重量 (包括RE-300液压马达的12KG)/Weight	P	[kg]	46
压力差/Pressure differential	Δ	[bar]	150
油流量/Oil flow	Q	[l/min]	13
输出转速/Output speed	n	[min ⁻¹]	5
最大可达扭矩/Max achievable torque	Md	[Nm]	2852

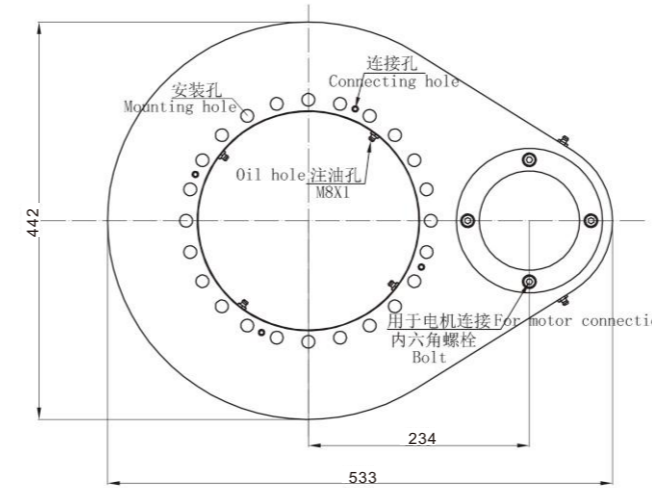


— 滚道曲线/Raceway curve

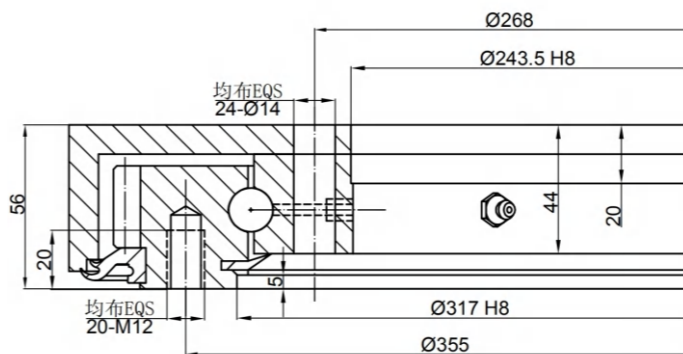
【SG-I系列】

SG-I Series

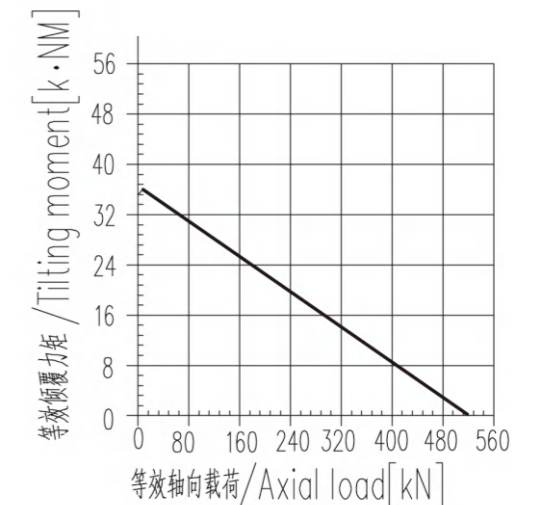
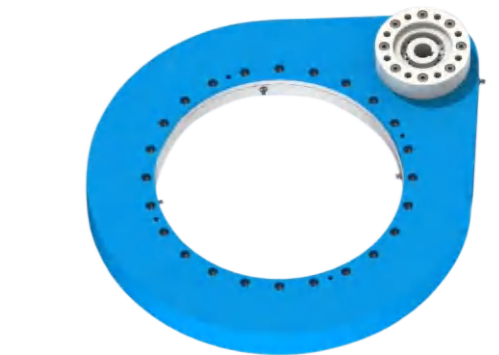
【SG-I-0311】



回转驱动的润滑
Lubrication of slewing drive
内径上有4个M8X1的注油嘴
4 M8X1 grease nipples on the inner ring
壳体两侧边有2个M8X1的注油嘴
2 M8X1 grease nipples on the housing
回转驱动应预先润滑
Slewing drive supplied pre-lubricated



模数/Module	m	[mm]	4
齿圈齿数/Teeth number of wheel	z2	[-]	102
小齿轮齿数/Teeth number of pinion	z1	[-]	15
总传动比/Overall gear ration	i	[-]	6.80
最大扭矩/Max torque SFS=1.75	Md max	[Nm]	3574
标准扭矩/Nom torque SF=1 at n=5rpm	Md nom	[Nm]	2520
最大保持扭矩/Max holding torque	Mh	[Nm]	3574
径向额定静载荷/Radial static load	Co rad	[kN]	198
轴向额定静载荷/Axial static load	Co ax	[kN]	529
径向额定动载荷/Radial dynamic load	C rad	[kN]	163
轴向额定动载荷/Axial dynamic load	C ax	[kN]	190
重量 (包括RE-300液压马达的12KG)/Weight	P	[kg]	52
压力差/Pressure differential	Δ	[bar]	150
油流量/Oil flow	Q	[l/min]	15
输出转速/Output speed	n	[min ⁻¹]	5
最大可达扭矩/Max achievable torque	Md	[Nm]	3574

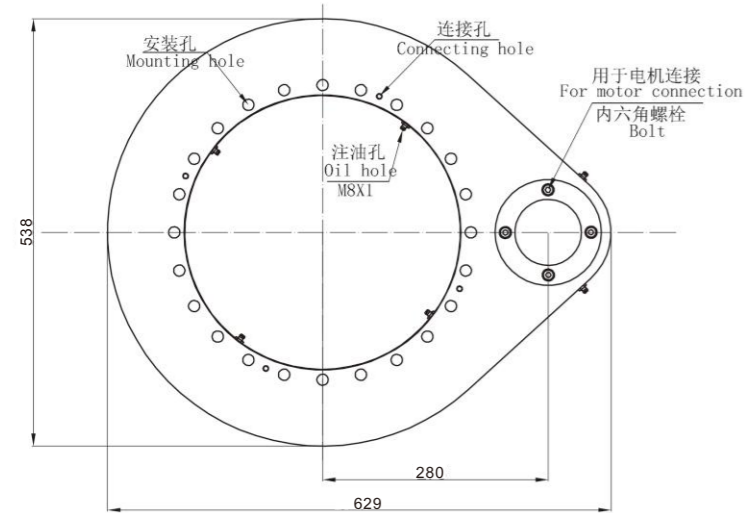


— 滚道曲线/Raceway curve
- - 螺栓曲线/Bolt curve R p0.2
螺栓等级/Bolt class 10.9

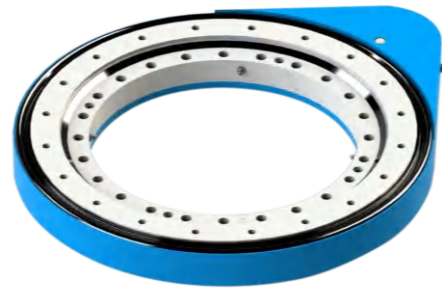
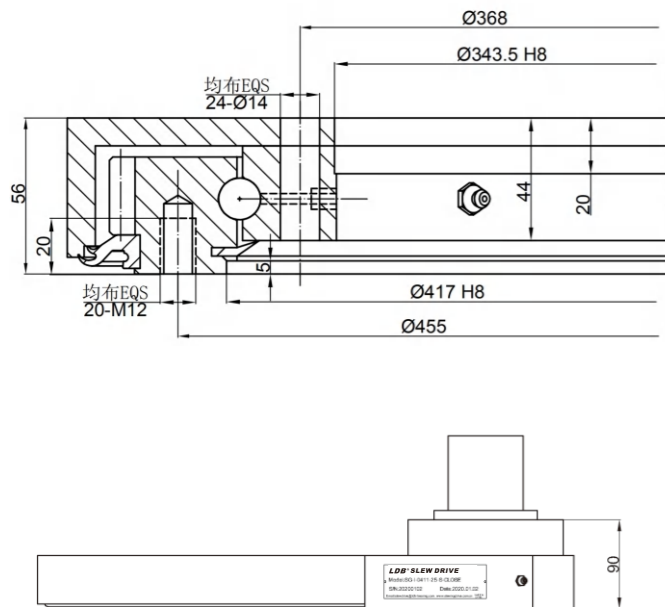
【SG-I系列】

SG-I Series

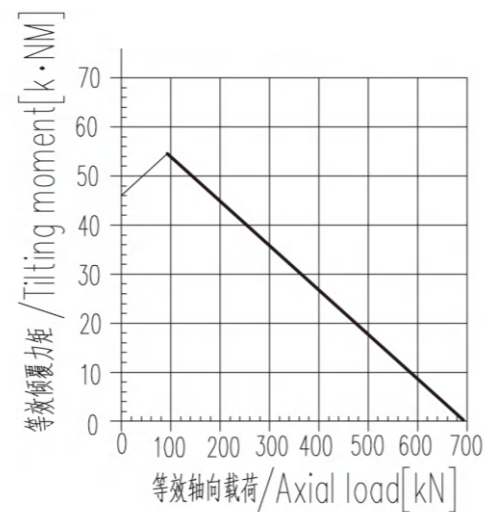
【SG-I-0411】



回转驱动的润滑
Lubrication of slewing drive
内径上有4个M8X1的注油嘴
4 M8X1 grease nipples on the inner ring
壳体两侧边有2个M8X1的注油嘴
2 M8X1 grease nipples on the housing
回转驱动应预先润滑
Slewing drive supplied pre-lubricated



模数/Module	m	[mm]	4
齿圈齿数/Teeth number of wheel	z ₂	[-]	126
小齿轮齿数/Teeth number of pinion	z ₁	[-]	15
总传动比/Overall gear ration	i	[-]	8.40
最大扭矩/Max torque SFS=1.75	M _{d max}	[Nm]	4476
标准扭矩/Nom torque SF=1 at n=5rpm	M _{d nom}	[Nm]	3181
最大保持扭矩/Max holding torque	M _h	[Nm]	4476
径向额定静载荷/Radial static load	C _{o rad}	[kN]	261
轴向额定静载荷/Axial static load	C _{o ax}	[kN]	699
径向额定动载荷/Radial dynamic load	C _{rad}	[kN]	180
轴向额定动载荷/Axial dynamic load	C _{ax}	[kN]	211
重量 (包括RE-300液压马达的12KG)/Weight	P	[kg]	62
压力差/Pressure differential	Δ	[bar]	150
油量/Oil flow	Q	[l/min]	17
输出转速/Output speed	n	[min ⁻¹]	5
最大可达扭矩/Max achievable torque	M _d	[Nm]	4476

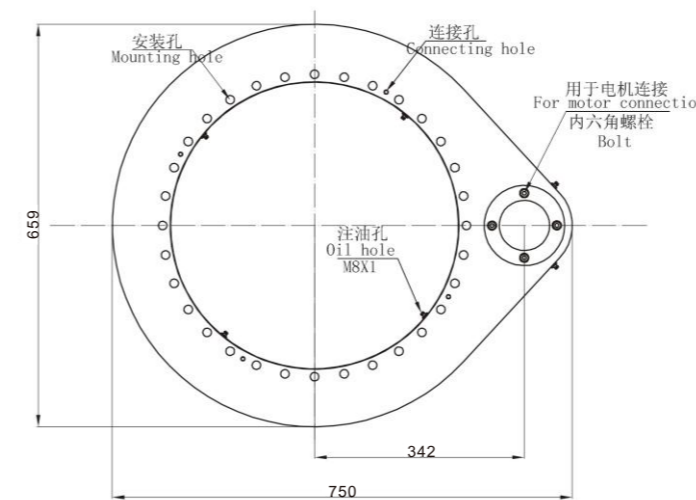


— 滚道曲线/Raceway curve
— 螺栓曲线/Bolt curve R p0.2
螺栓等级/Bolt class 10.9

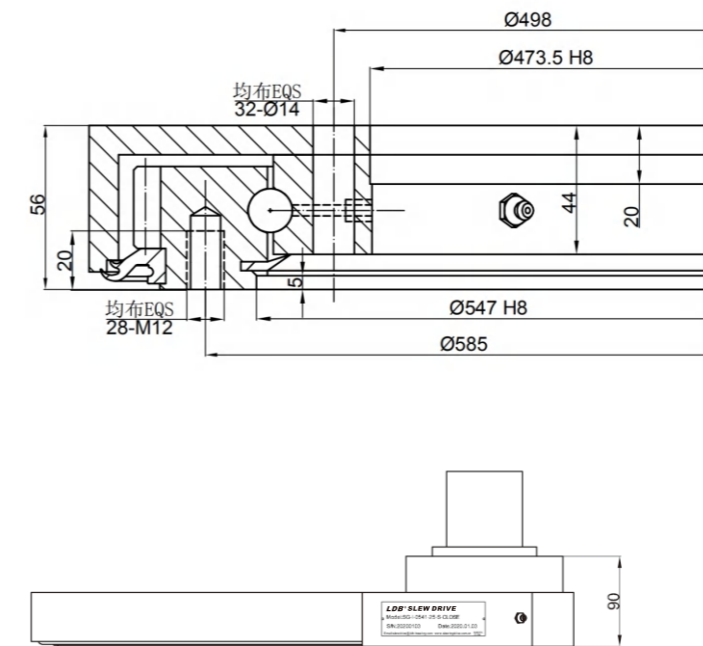
【SG-I系列】

SG-I Series

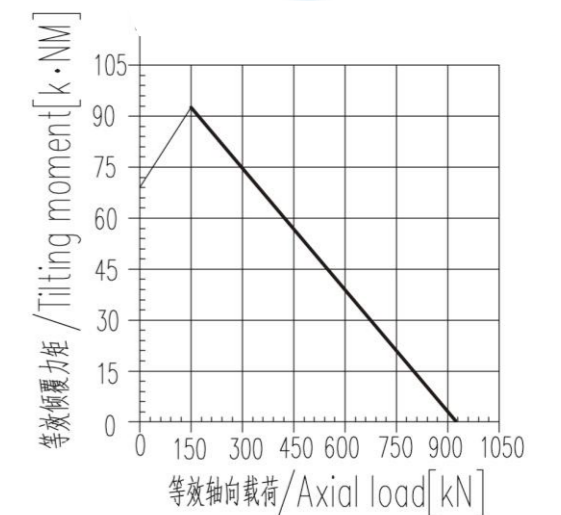
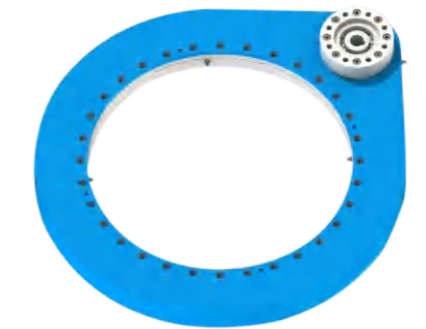
【SG-I-0541】



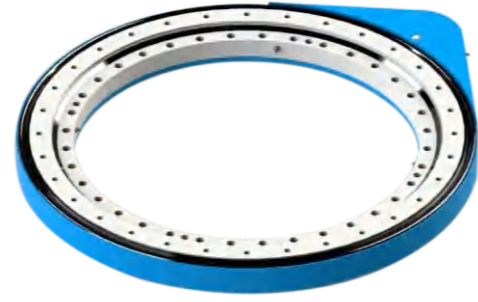
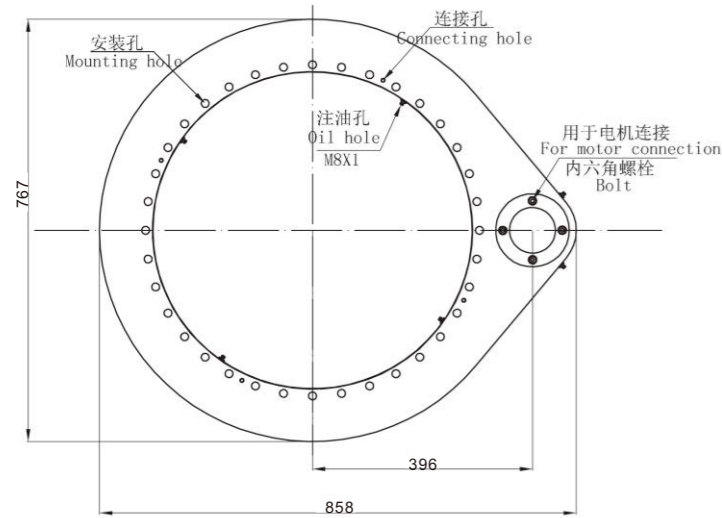
回转驱动的润滑
Lubrication of slewing drive
内径上有4个M8X1的注油嘴
4 M8X1 grease nipples on the inner ring
壳体两侧边有2个M8X1的注油嘴
2 M8X1 grease nipples on the housing
回转驱动应预先润滑
Slewing drive supplied pre-lubricated



模数/Module	m	[mm]	4
齿圈齿数/Teeth number of wheel	z ₂	[-]	156
小齿轮齿数/Teeth number of pinion	z ₁	[-]	15
总传动比/Overall gear ration	i	[-]	10.40
最大扭矩/Max torque SFS=1.75	M _{d max}	[Nm]	5632
标准扭矩/Nom torque SF=1 at n=5rpm	M _{d nom}	[Nm]	4031
最大保持扭矩/Max holding torque	M _h	[Nm]	5632
径向额定静载荷/Radial static load	C _{o rad}	[kN]	344
轴向额定静载荷/Axial static load	C _{o ax}	[kN]	922
径向额定动载荷/Radial dynamic load	C _{rad}	[kN]	201
轴向额定动载荷/Axial dynamic load	C _{ax}	[kN]	236
重量 (包括RE-300液压马达的12KG)/Weight	P	[kg]	75
压力差/Pressure differential	Δ	[bar]	150
油量/Oil flow	Q	[l/min]	21
输出转速/Output speed	n	[min ⁻¹]	5
最大可达扭矩/Max achievable torque	M _d	[Nm]	5632

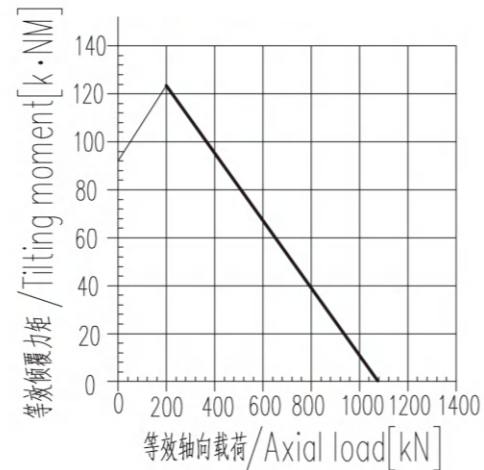
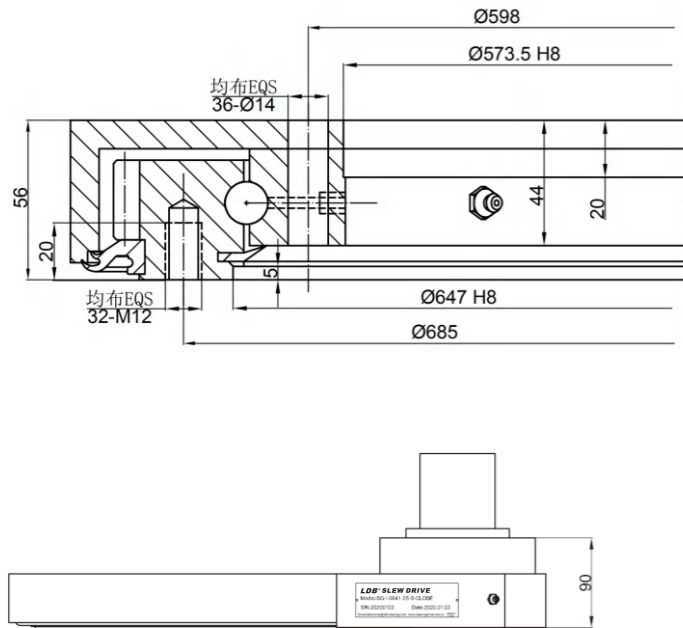


— 滚道曲线/Raceway curve
— 螺栓曲线/Bolt curve R p0.2
螺栓等级/Bolt class 10.9

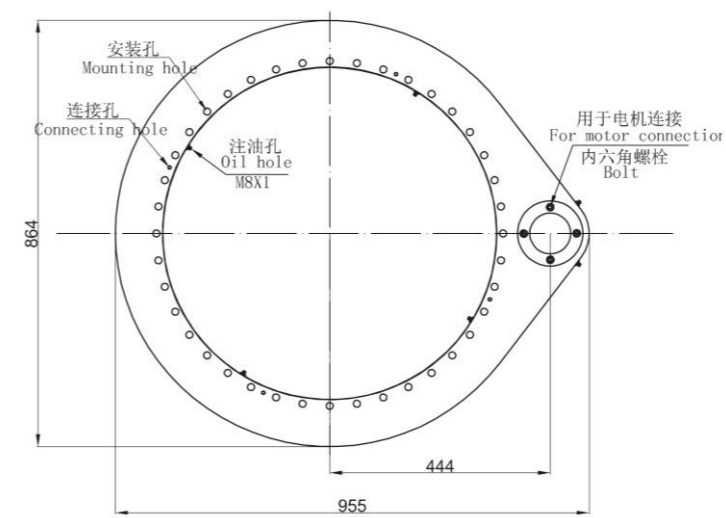


模数/Module	m	[mm]	4
齿圈齿数/Teeth number of wheel	z2	[-]	183
小齿轮齿数/Teeth number of pinion	z1	[-]	15
总传动比/Overall gear ration	i	[-]	12.20
最大扭矩/Max torque SFS=1.75	Md max	[Nm]	6534
标准扭矩/Nom torque SF=1 at n=5rpm	Md nom	[Nm]	4675
最大保持扭矩/Max holding torque	Mh	[Nm]	6534
径向额定静载荷/Radial static load	Co rad	[kN]	408
轴向额定静载荷/Axial static load	Co ax	[kN]	1092
径向额定动载荷/Radial dynamic load	C rad	[kN]	215
轴向额定动载荷/Axial dynamic load	C ax	[kN]	251
重量 (包括RE-300液压马达的12KG)/Weight	P	[kg]	85
压力差/Pressure differential	Δ	[bar]	155
油流量/Oil flow	Q	[l/min]	23
输出转速/Output speed	n	[min-1]	5
最大可达扭矩/Max achievable torque	Ma	[Nm]	6534

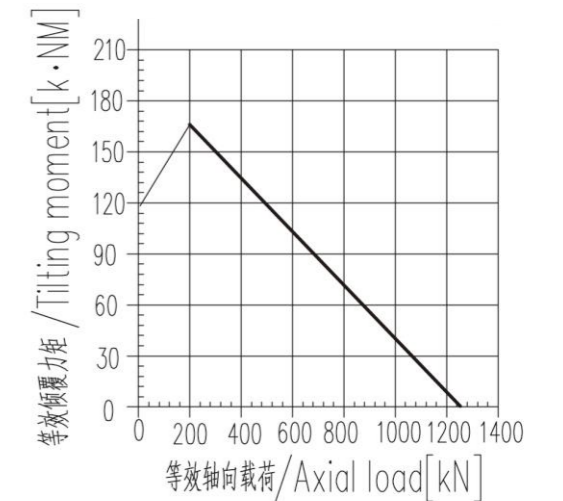
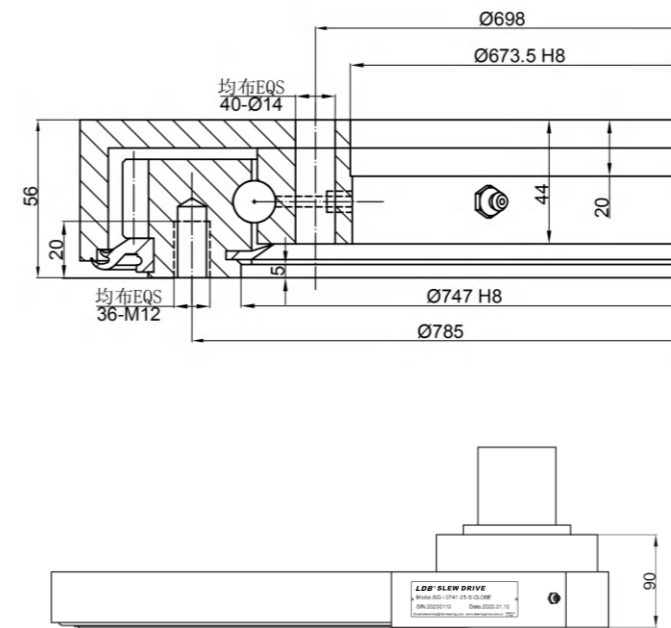
回转驱动的润滑
Lubrication of slewing drive
内径上有4个M8X1的注油嘴
4 M8X1 grease nipples on the inner ring
壳体两侧边有2个M8X1的注油嘴
2 M8X1 grease nipples on the housing
回转驱动应预先润滑
Slewing drive supplied pre-lubricated



— 滚道曲线/Raceway curve
— 螺栓曲线/Bolt curve R p0.2
螺栓等级/Bolt class 10.9

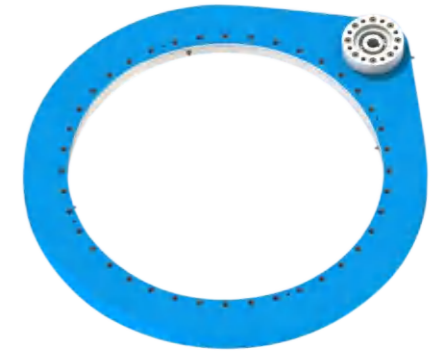


回转驱动的润滑
Lubrication of slewing drive
内径上有4个M8X1的注油嘴
4 M8X1 grease nipples on the inner ring
壳体两侧边有2个M8X1的注油嘴
2 M8X1 grease nipples on the housing
回转驱动应预先润滑
Slewing drive supplied pre-lubricated



— 滚道曲线/Raceway curve
— 螺栓曲线/Bolt curve R p0.2
螺栓等级/Bolt class 10.9

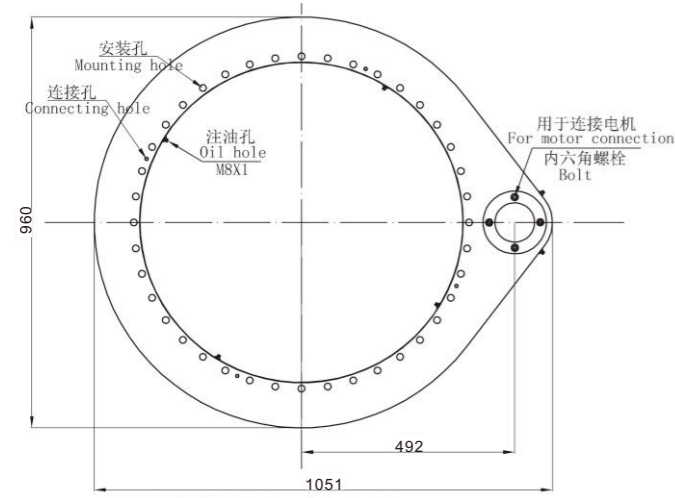
模数/Module	m	[mm]	4
齿圈齿数/Teeth number of wheel	z2	[-]	207
小齿轮齿数/Teeth number of pinion	z1	[-]	15
总传动比/Overall gear ration	i	[-]	13.80
最大扭矩/Max torque SFS=1.75	Md max	[Nm]	7437
标准扭矩/Nom torque SF=1 at n=5rpm	Md nom	[Nm]	5362
最大保持扭矩/Max holding torque	Mh	[Nm]	7437
径向额定静载荷/Radial static load	Co rad	[kN]	471
轴向额定静载荷/Axial static load	Co ax	[kN]	1262
径向额定动载荷/Radial dynamic load	C rad	[kN]	226
轴向额定动载荷/Axial dynamic load	C ax	[kN]	264
重量 (包括RE-300液压马达的12KG)/Weight	P	[kg]	95
压力差/Pressure differential	Δ	[bar]	155
油流量/Oil flow	Q	[l/min]	25
输出转速/Output speed	n	[min-1]	5
最大可达扭矩/Max achievable torque	Md	[Nm]	7437



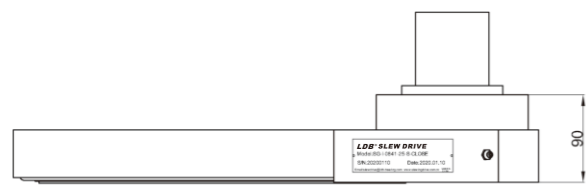
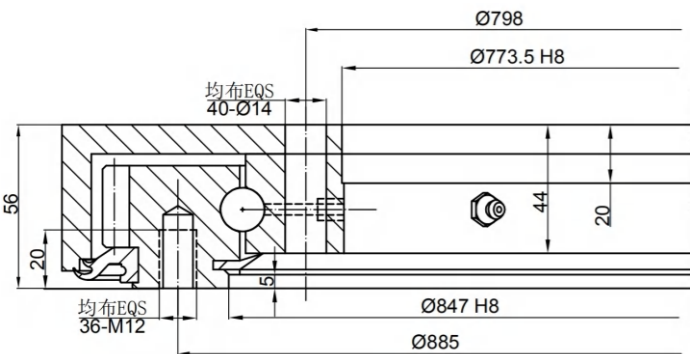
【SG-I系列】

SG-I Series

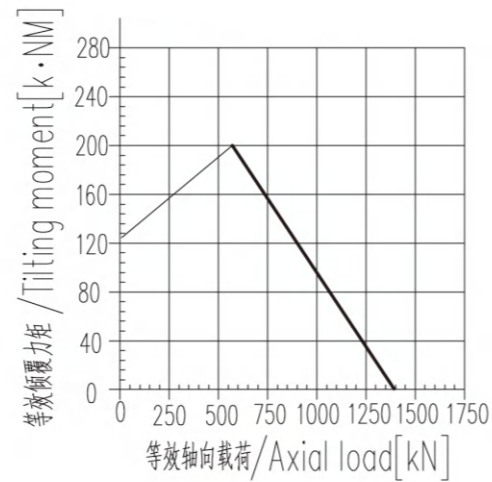
【SG-I-0841】



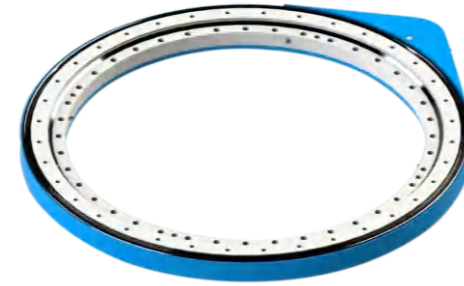
回转驱动的润滑
Lubrication of slewing drive
内径上有4个M8X1的注油嘴
4 M8X1 grease nipples on the inner ring
壳体两侧边有2个M8X1的注油嘴
2 M8X1 grease nipples on the housing
回转驱动应预先润滑/Slewing drive supplied pre-lubricated



模数/Module	m	[mm]	4
齿圈齿数/Teeth number of wheel	z2	[-]	231
小齿轮齿数/Teeth number of pinion	z1	[-]	15
总传动比/Overall gear ration	i	[-]	15.40
最大扭矩/Max torque SFS=1.75	Md max	[Nm]	8339
标准扭矩/Nom torque SF=1 at n=5rpm	Md nom	[Nm]	6012
最大保持扭矩/Max holding torque	Mh	[Nm]	8339
径向额定静载荷/Radial static load	Co rad	[kN]	535
轴向额定静载荷/Axial static load	Co ax	[kN]	1433
径向额定动载荷/Radial dynamic load	Crad	[kN]	237
轴向额定动载荷/Axial dynamic load	Cax	[kN]	278
重量 (包括RE-300液压马达的12KG)/Weight	P	[kg]	106
压力差/Pressure differential	Δ	[bar]	155
油流量/Oil flow	Q	[l/min]	28
输出转速/Output speed	n	[min-1]	5
最大可达扭矩/Max achievable torque	Md	[Nm]	8339



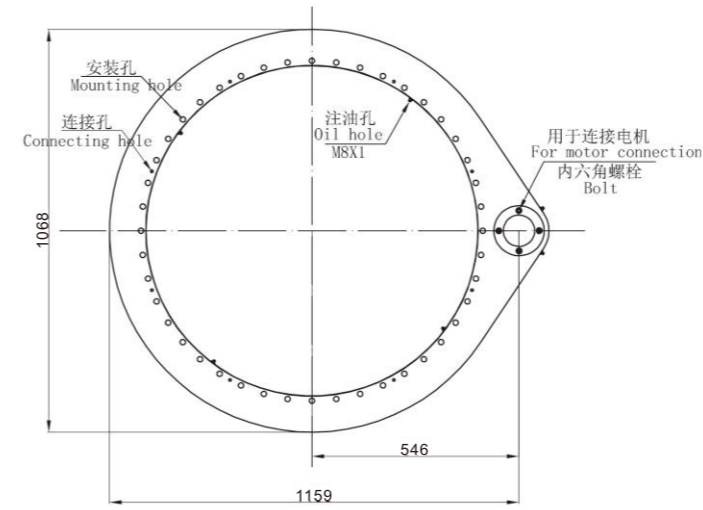
— 滚道曲线/Raceway curve
— 螺栓曲线/Bolt curve R p0.2
螺栓等级/Bolt class 10.9



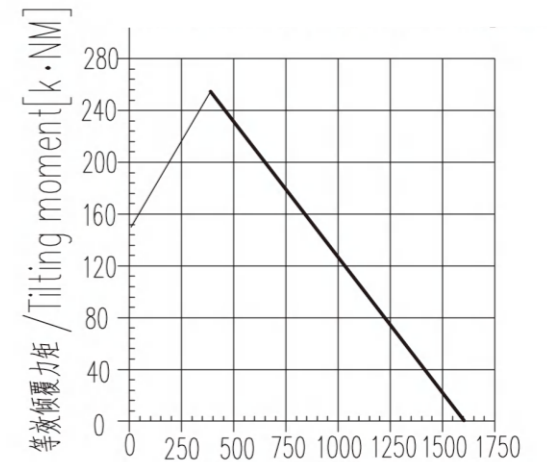
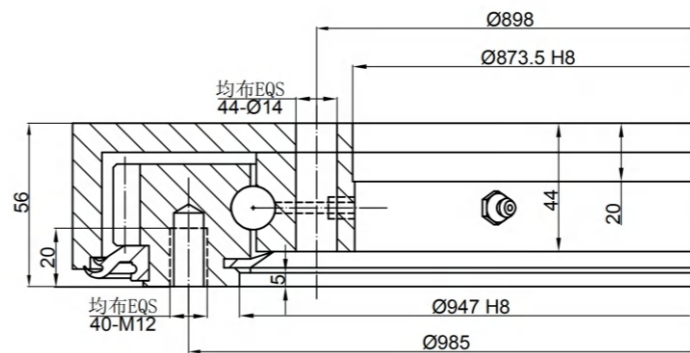
【SG-I系列】

SG-I Series

【SG-I-0941】

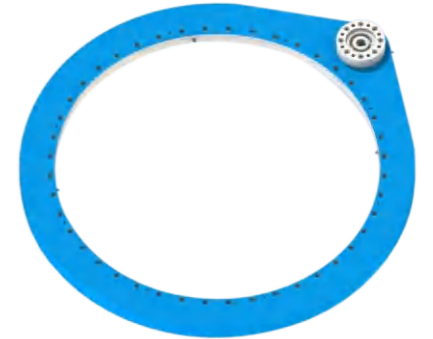


回转驱动的润滑
Lubrication of slewing drive
内径上有4个M8X1的注油嘴
4 M8X1 grease nipples on the inner ring
壳体两侧边有2个M8X1的注油嘴
2 M8X1 grease nipples on the housing
回转驱动应预先润滑/Slewing drive supplied pre-lubricated



— 滚道曲线/Raceway curve
— 螺栓曲线/Bolt curve R p0.2
螺栓等级/Bolt class 10.9

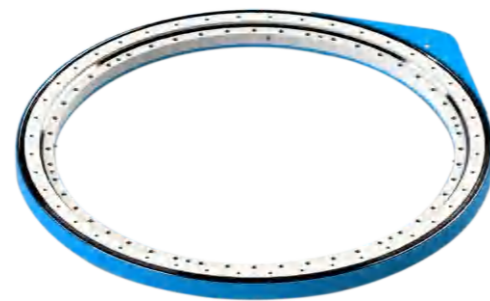
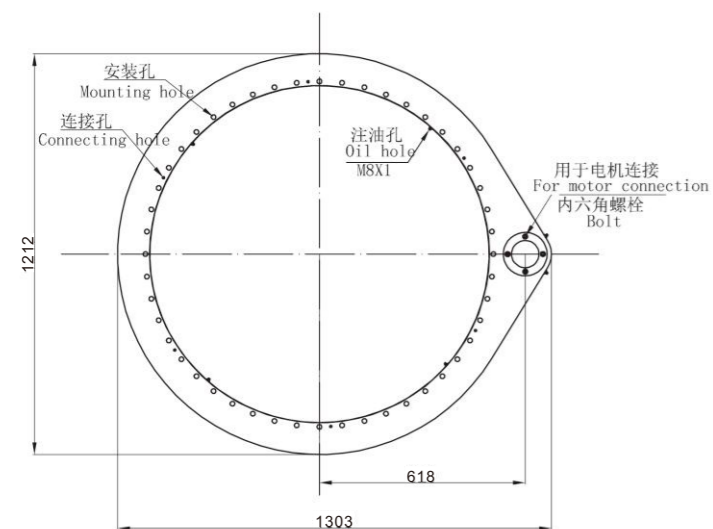
模数/Module	m	[mm]	4
齿圈齿数/Teeth number of wheel	z2	[-]	258
小齿轮齿数/Teeth number of pinion	z1	[-]	15
总传动比/Overall gear ration	i	[-]	17.20
最大扭矩/Max torque SFS=1.75	Md max	[Nm]	9242
标准扭矩/Nom torque SF=1 at n=5rpm	Md nom	[Nm]	6688
最大保持扭矩/Max holding torque	Mh	[Nm]	9242
径向额定静载荷/Radial static load	Co rad	[kN]	599
轴向额定静载荷/Axial static load	Co ax	[kN]	1603
径向额定动载荷/Radial dynamic load	Crad	[kN]	247
轴向额定动载荷/Axial dynamic load	Cax	[kN]	290
重量 (包括RE-300液压马达的12KG)/Weight	P	[kg]	116
压力差/Pressure differential	Δ	[bar]	155
油流量/Oil flow	Q	[l/min]	30
输出转速/Output speed	n	[min-1]	5
最大可达扭矩/Max achievable torque	Md	[Nm]	9242



【SG-I系列】

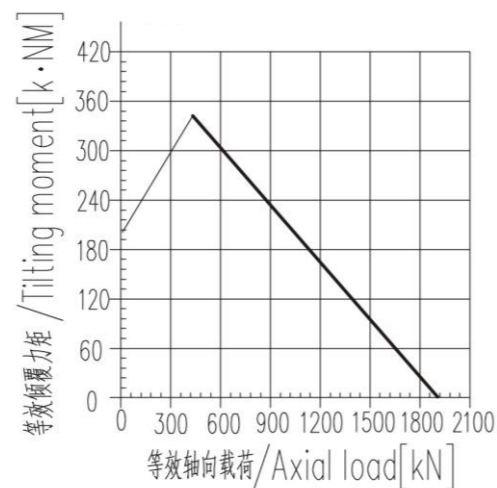
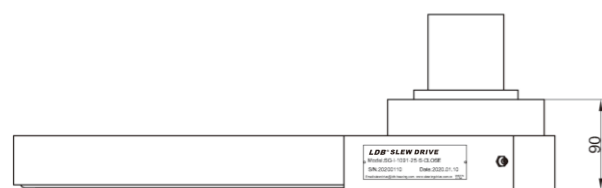
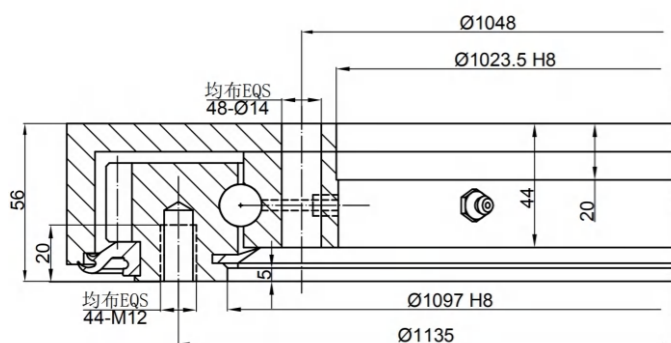
SG-I Series

【SG-I-1091】



模数/Module	m	[mm]	4
齿圈齿数/Teeth number of wheel	z2	[-]	294
小齿轮齿数/Teeth number of pinion	z1	[-]	15
总传动比/Overall gear ration	i	[-]	19.60
最大扭矩/Max torque SFS=1.75	Md max	[Nm]	10613
标准扭矩/Nom torque SF=1 at n=5rpm	Md nom	[Nm]	7681
最大保持扭矩/Max holding torque	Mh	[Nm]	10613
径向额定静载荷/Radial static load	Co rad	[kN]	695
轴向额定静载荷/Axial static load	Co ax	[kN]	1859
径向额定动载荷/Radial dynamic load	Crad	[kN]	261
轴向额定动载荷/Axial dynamic load	Cax	[kN]	305
重量 (包括RE-300液压马达的12KG)/Weight	P	[kg]	132
压力差/Pressure differential	Δ	[bar]	150
油流量/Oil flow	Q	[l/min]	35
输出转速/Output speed	n	[min-1]	5
最大可达扭矩/Max achievable torque	Md	[Nm]	10613

回转驱动的润滑
Lubrication of slewing drive
内径上有4个M8X1的注油嘴
4 M8X1 grease nipples on the inner ring
壳体两侧边有2个M8X1的注油嘴
2 M8X1 grease nipples on the housing
回转驱动应预先润滑/Slewing drive supplied pre-lubricated

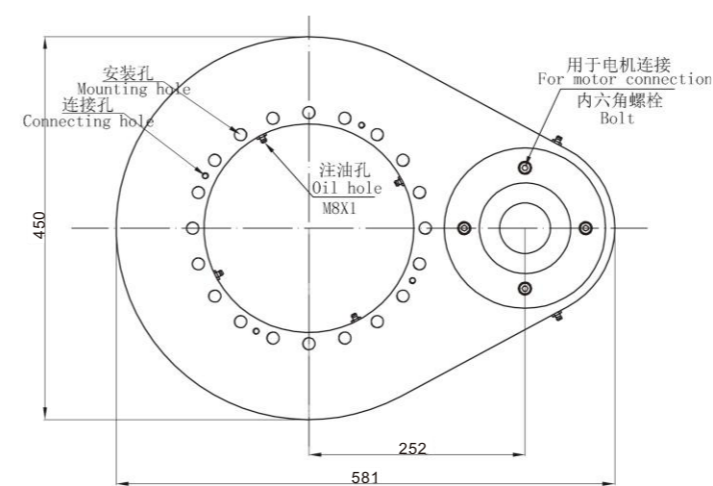


— 滚道曲线/Raceway curve
— 螺栓曲线/Bolt curve R p0.2
螺栓等级/Bolt class 10.9

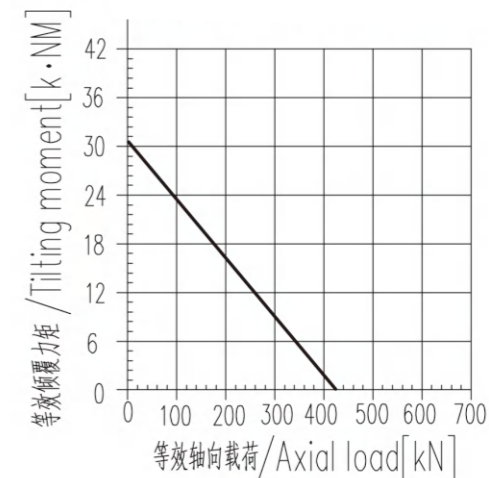
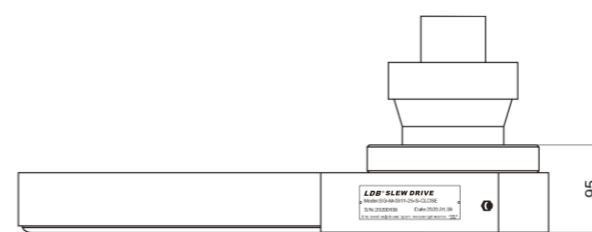
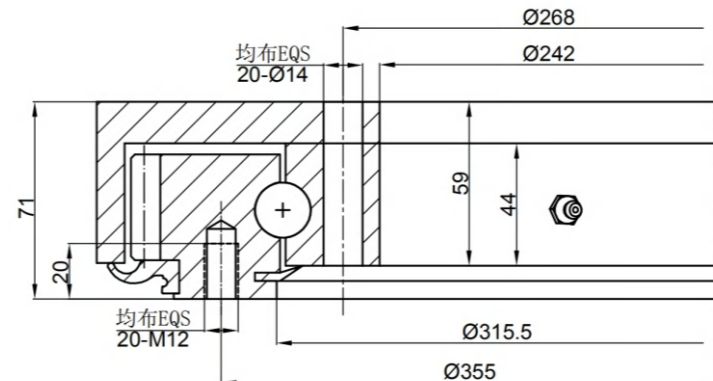
【SG-M系列】

SG-M Series

【SG-M-0311】



回转驱动的润滑
Lubrication of slewing drive
内径上有4个M8X1的注油嘴
4 M8X1 grease nipples on the inner ring
壳体两侧边有2个M8X1的注油嘴
2 M8X1 grease nipples on the housing
回转驱动应预先润滑
Slewing drive supplied pre-lubricated



— 滚道曲线/Raceway curve
— 螺栓曲线/Bolt curve R p0.2
螺栓等级/Bolt class 10.9

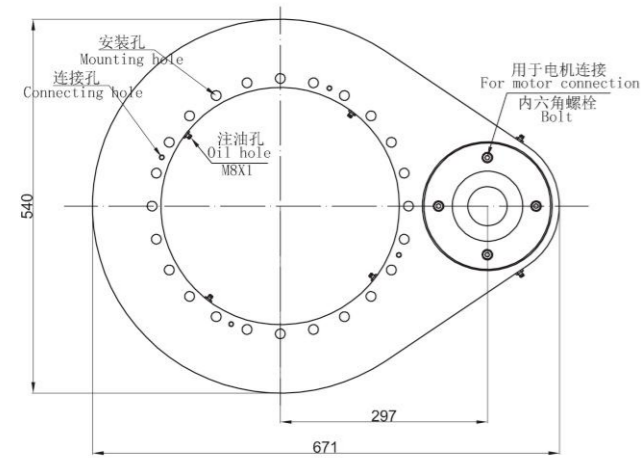
模数/Module	m	[mm]	6
齿圈齿数/Teeth number of wheel	z2	[-]	69
小齿轮齿数/Teeth number of pinion	z1	[-]	15
总传动比/Overall gear ration	i	[-]	4.60
最大扭矩/Max torque	Md max	[Nm]	8191
标准扭矩/Nom torque SF=1 at n=5rpm	Md nom	[Nm]	6139
最大保持扭矩/Max holding torque	Mh	[Nm]	8191
径向额定静载荷/Radial static load	Co rad	[kN]	181
轴向额定静载荷/Axial static load	Co ax	[kN]	425
径向额定动载荷/Radial dynamic load	Crad	[kN]	133
轴向额定动载荷/Axial dynamic load	Cax	[kN]	133
重量 (包括T-306液压马达的8KG)/Weight	P	[kg]	80
压力差/Pressure differential	Δ	[bar]	124
油流量/Oil flow	Q	[l/min]	39
输出转速/Output speed	n	[min-1]	5
最大可达扭矩/Max achievable torque	Md	[Nm]	8191



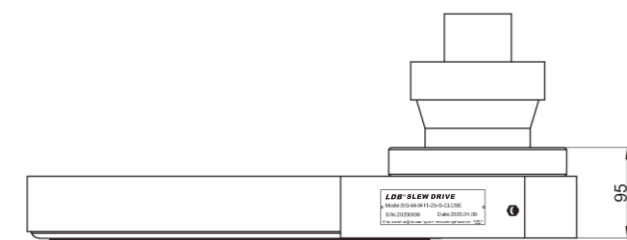
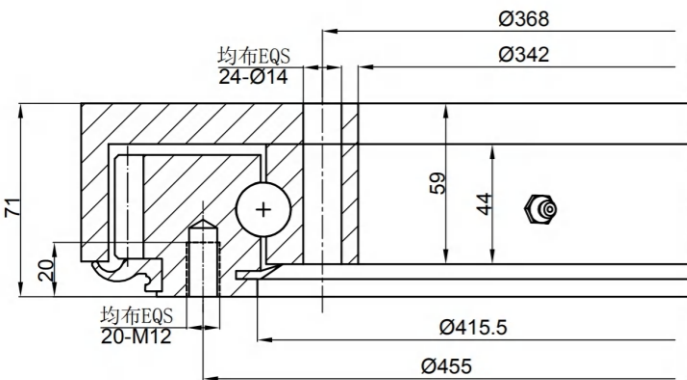
【SG-M系列】

SG-M Series

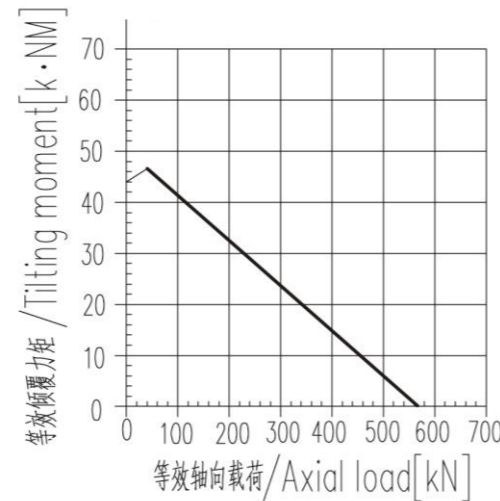
【SG-M-0411】



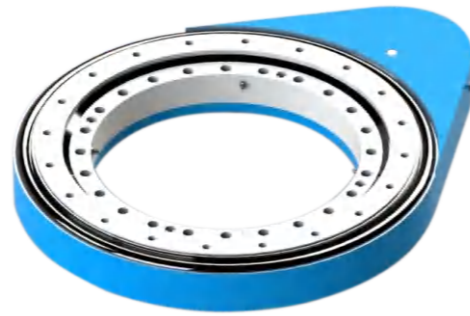
回转驱动的润滑
Lubrication of slewing drive
内径上有4个M8X1的注油嘴
4 M8X1 grease nipples on the inner ring
壳体两侧边有2个M8X1的注油嘴
2 M8X1 grease nipples on the housing
回转驱动应预先润滑
Slewing drive supplied pre-lubricated



模数/Module	m	[mm]	6
齿圈齿数/Teeth number of wheel	z2	[-]	84
小齿轮齿数/Teeth number of pinion	z1	[-]	15
总传动比/Overall gear ration	i	[-]	5.60
最大扭矩/Max torque	Md max	[Nm]	10147
标准扭矩/Nom torque SF=1 at n=5rpm	Md nom	[Nm]	7687
最大保持扭矩/Max holding torque	Mh	[Nm]	10147
径向额定静载荷/Radial static load	Co rad	[kN]	240
轴向额定静载荷/Axial static load	Co ax	[kN]	561
径向额定动载荷/Radial dynamic load	C rad	[kN]	147
轴向额定动载荷/Axial dynamic load	C ax	[kN]	147
重量 (包括2-200液压马达的10KG)/Weight	P	[kg]	95
压力差/Pressure differential	Δ	[bar]	190
油流量/Oil flow	Q	[l/min]	28
输出转速/Output speed	n	[min-1]	5
最大可达扭矩/Max achievable torque	Md	[Nm]	10147



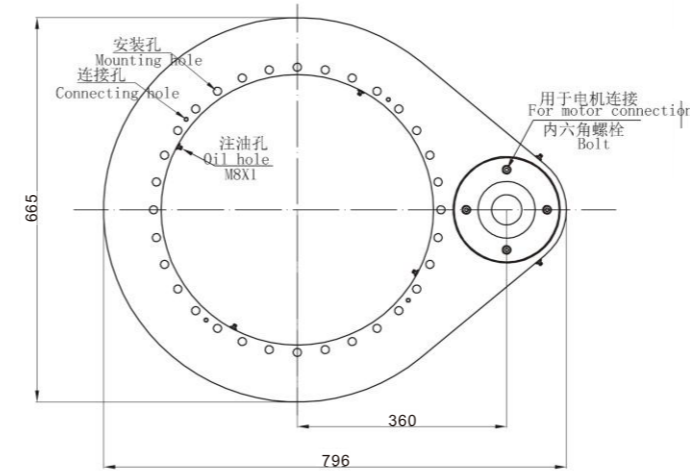
— 滚道曲线/Raceway curve
- - 螺栓曲线/Bolt curve R p0.2
螺栓等级/Bolt class 10.9



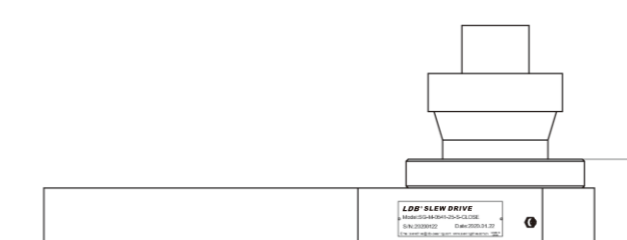
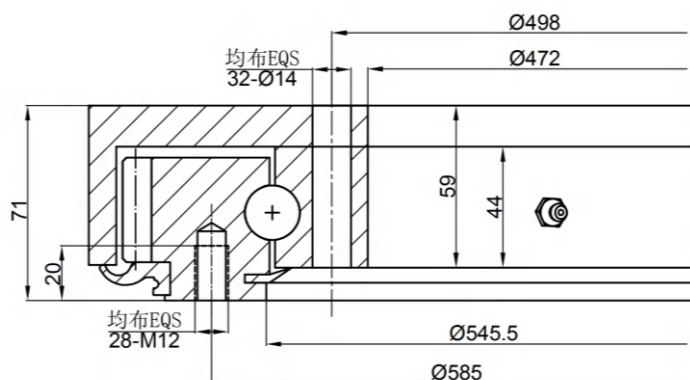
【SG-M系列】

SG-M Series

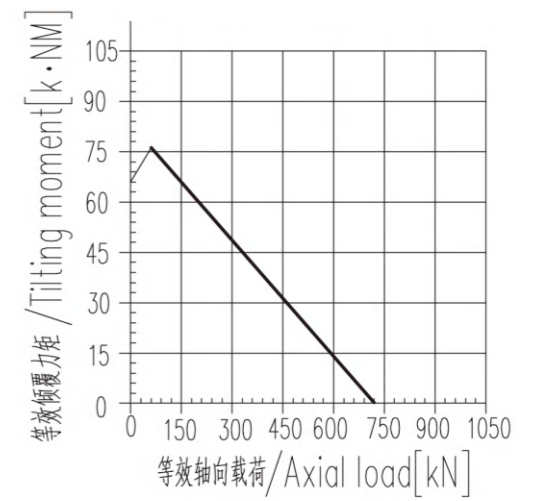
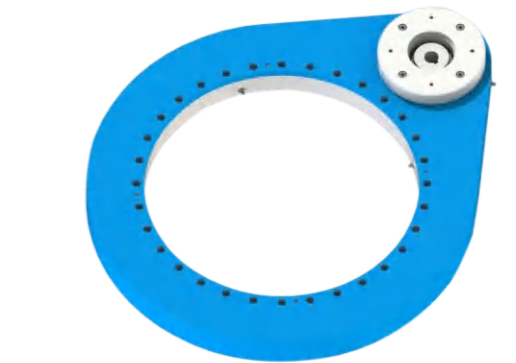
【SG-M-0541】



回转驱动的润滑
Lubrication of slewing drive
内径上有4个M8X1的注油嘴
4 M8X1 grease nipples on the inner ring
壳体两侧边有2个M8X1的注油嘴
2 M8X1 grease nipples on the housing
回转驱动应预先润滑
Slewing drive supplied pre-lubricated



模数/Module	m	[mm]	6
齿圈齿数/Teeth number of wheel	z2	[-]	105
小齿轮齿数/Teeth number of pinion	z1	[-]	15
总传动比/Overall gear ration	i	[-]	7
最大扭矩/Max torque	Md max	[Nm]	12837
标准扭矩/Nom torque SF=1 at n=5rpm	Md nom	[Nm]	9845
最大保持扭矩/Max holding torque	Mh	[Nm]	12837
径向额定静载荷/Radial static load	Co rad	[kN]	316
轴向额定静载荷/Axial static load	Co ax	[kN]	739
径向额定动载荷/Radial dynamic load	C rad	[kN]	164
轴向额定动载荷/Axial dynamic load	C ax	[kN]	165
重量 (包括2-200液压马达的10KG)/Weight	P	[kg]	110
压力差/Pressure differential	Δ	[bar]	190
油流量/Oil flow	Q	[l/min]	34
输出转速/Output speed	n	[min-1]	5
最大可达扭矩/Max achievable torque	Md	[Nm]	12837

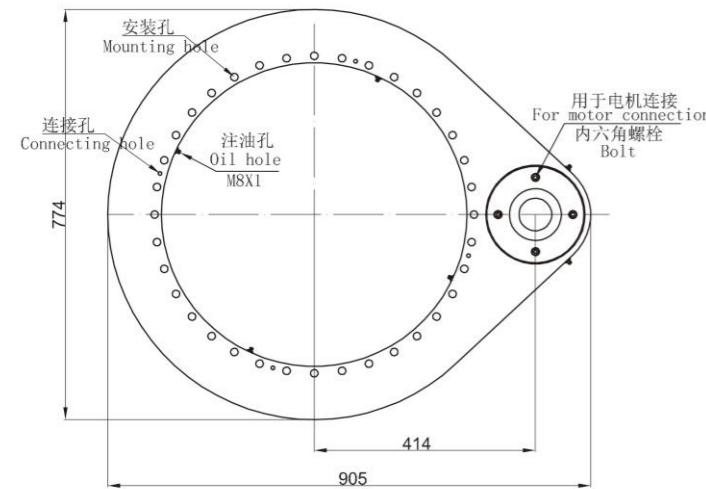


— 滚道曲线/Raceway curve
- - 螺栓曲线/Bolt curve R p0.2
螺栓等级/Bolt class 10.9

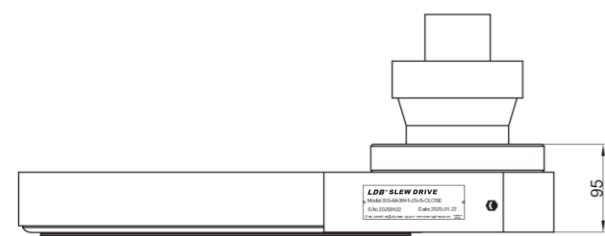
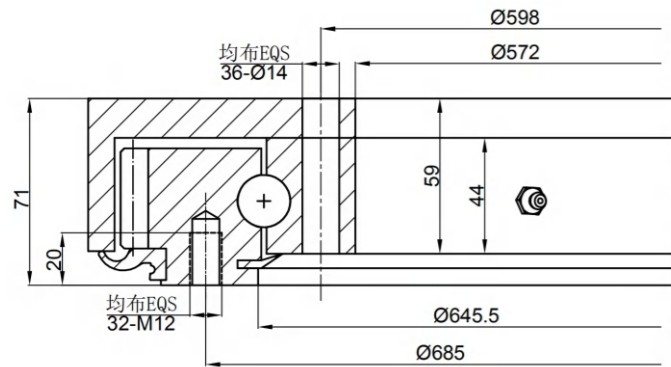
【SG-M系列】

SG-M Series

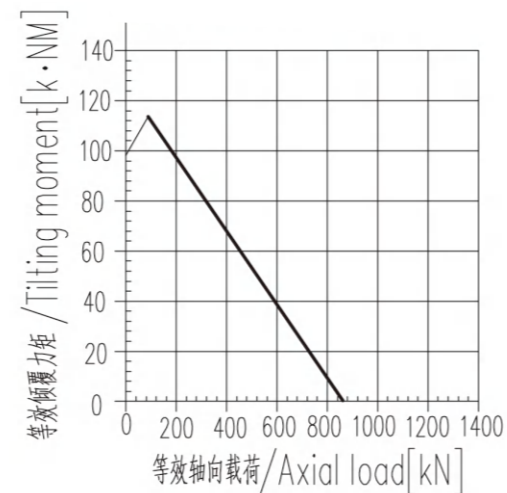
【SG-M-0641】



回转驱动的润滑
Lubrication of slewing drive
内径上有4个M8X1的注油嘴
4 M8X1 grease nipples on the inner ring
壳体两侧边有2个M8X1的注油嘴
2 M8X1 grease nipples on the housing
回转驱动应预先润滑
Slewing drive supplied pre-lubricated



模数/Module	m	[mm]	6
齿圈齿数/Teeth number of wheel	z2	[-]	123
小齿轮齿数/Teeth number of pinion	z1	[-]	15
总传动比/Overall gear ration	i	[-]	8.20
最大扭矩/Max torque	Md max	[Nm]	14916
标准扭矩/Nom torque SF=1 at n=5rpm	Md nom	[Nm]	11508
最大保持扭矩/Max holding torque	Mh	[Nm]	14916
径向额定静载荷/Radial static load	Co rad	[kN]	374
轴向额定静载荷/Axial static load	Co ax	[kN]	876
径向额定动载荷/Radial dynamic load	Crad	[kN]	175
轴向额定动载荷/Axial dynamic load	Cax	[kN]	176
重量 (包括2-200液压马达的10KG)/Weight	P	[kg]	125
压力差/Pressure differential	Δ	[bar]	190
油流量/Oil flow	Q	[l/min]	38
输出转速/Output speed	n	[min-1]	5
最大可达扭矩/Max achievable torque	Md	[Nm]	14916

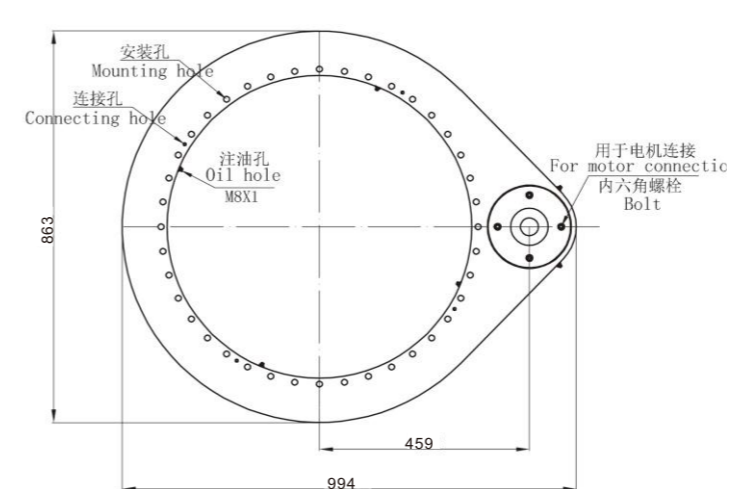


— 滚道曲线/Raceway curve
- 螺栓曲线/Bolt curve R p0.2
螺栓等级/Bolt class 10.9

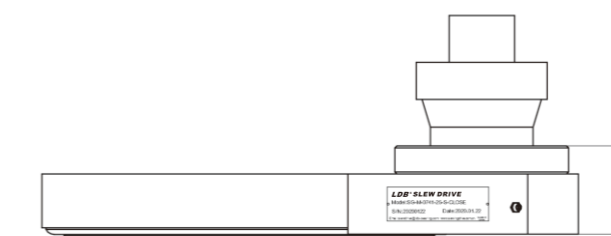
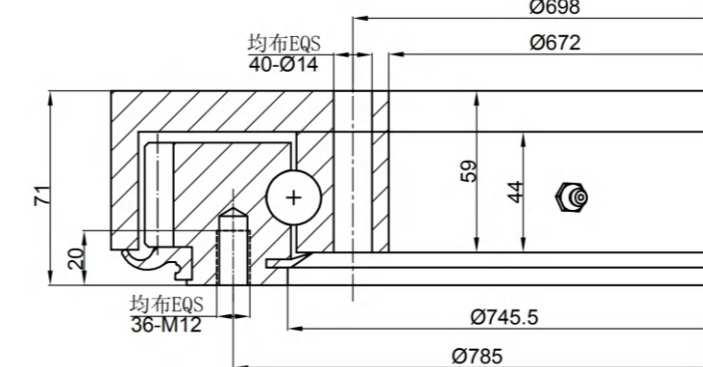
【SG-M系列】

SG-M Series

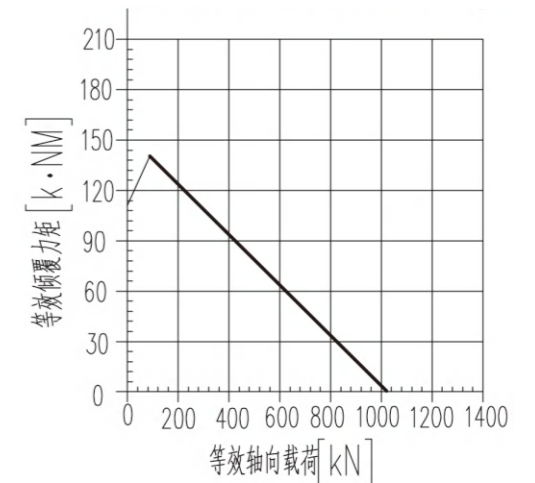
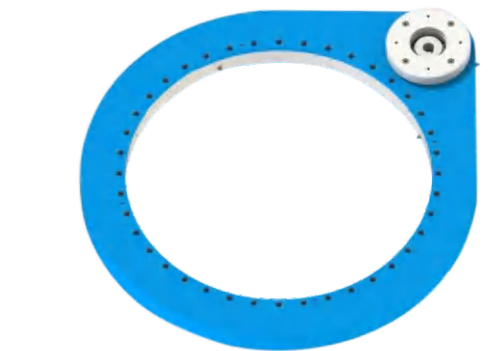
【SG-M-0741】



回转驱动的润滑
Lubrication of slewing drive
内径上有4个M8X1的注油嘴
4 M8X1 grease nipples on the inner ring
壳体两侧边有2个M8X1的注油嘴
2 M8X1 grease nipples on the housing
回转驱动应预先润滑
Slewing drive supplied pre-lubricated



模数/Module	m	[mm]	6
齿圈齿数/Teeth number of wheel	z2	[-]	138
小齿轮齿数/Teeth number of pinion	z1	[-]	15
总传动比/Overall gear ration	i	[-]	9.20
最大扭矩/Max torque	Md max	[Nm]	16872
标准扭矩/Nom torque SF=1 at n=5rpm	Md nom	[Nm]	13057
最大保持扭矩/Max holding torque	Mh	[Nm]	16872
径向额定静载荷/Radial static load	Co rad	[kN]	433.2
轴向额定静载荷/Axial static load	Co ax	[kN]	1013
径向额定动载荷/Radial dynamic load	Crad	[kN]	184
轴向额定动载荷/Axial dynamic load	Cax	[kN]	185
重量 (包括2-200液压马达的10KG)/Weight	P	[kg]	140
压力差/Pressure differential	Δ	[bar]	190
油流量/Oil flow	Q	[l/min]	43
输出转速/Output speed	n	[min-1]	5
最大可达扭矩/Max achievable torque	Md	[Nm]	16872

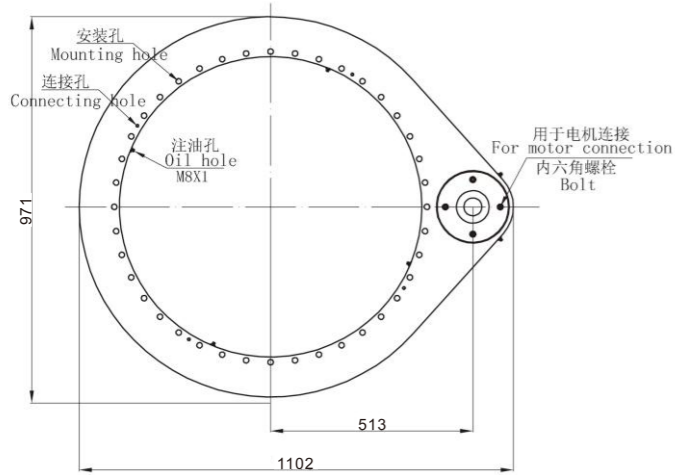


— 滚道曲线/Raceway curve
- 螺栓曲线/Bolt curve R p0.2
螺栓等级/Bolt class 10.9

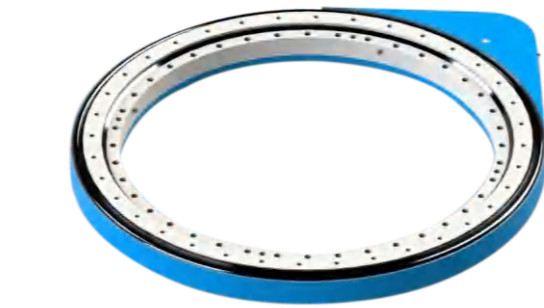
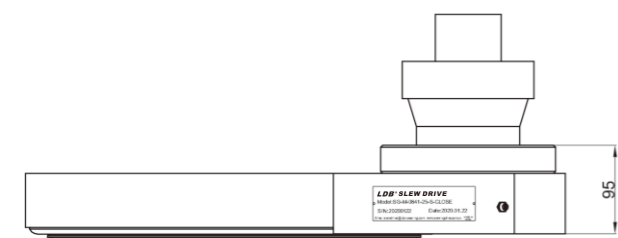
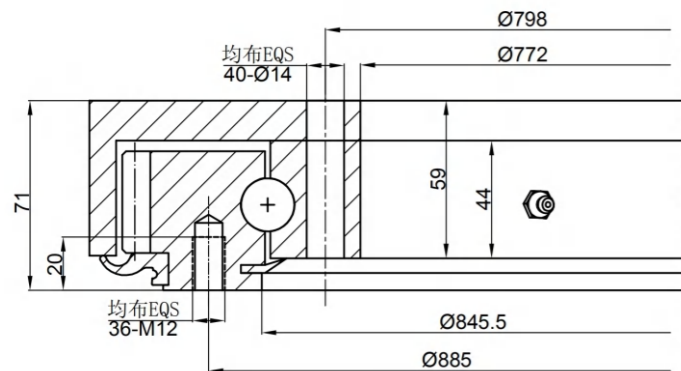
【SG-M系列】

SG-M Series

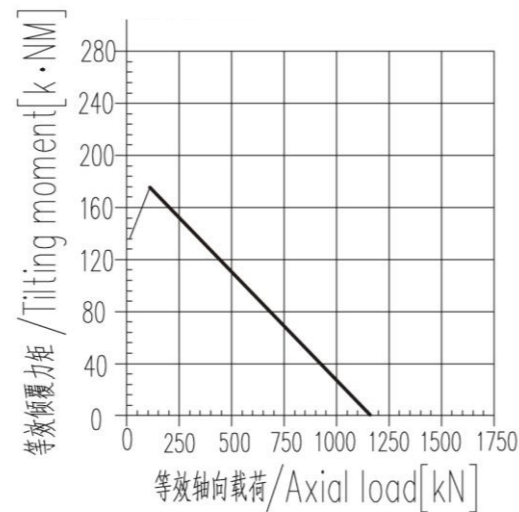
【SG-M-0841】



回转驱动的润滑
Lubrication of slewing drive
内径上有4个M8X1的注油嘴
4 M8X1 grease nipples on the inner ring
壳体两侧边有2个M8X1的注油嘴
2 M8X1 grease nipples on the housing
回转驱动应预先润滑
Slewing drive supplied pre-lubricated



模数/Module	m	[mm]	6
齿圈齿数/Teeth number of wheel	z2	[-]	156
小齿轮齿数/Teeth number of pinion	z1	[-]	15
总传动比/Overall gear ration	i	[-]	10.40
最大扭矩/Max torque	Md max	[Nm]	19073
标准扭矩/Nom torque SF=1 at n=5rpm	Md nom	[Nm]	14805
最大保持扭矩/Max holding torque	Mh	[Nm]	19073
径向额定静载荷/Radial static load	Co rad	[kN]	492
轴向额定静载荷/Axial static load	Co ax	[kN]	1150
径向额定动载荷/Radial dynamic load	Cr ad	[kN]	194
轴向额定动载荷/Axial dynamic load	Cax	[kN]	195
重量 (包括2-200液压马达的10KG)/Weight	P	[kg]	155
压力差/Pressure differential	Δ	[bar]	190
油流量/Oil flow	Q	[l/min]	48
输出转速/Output speed	n	[min-1]	5
最大可达扭矩/Max achievable torque	Md	[Nm]	19073

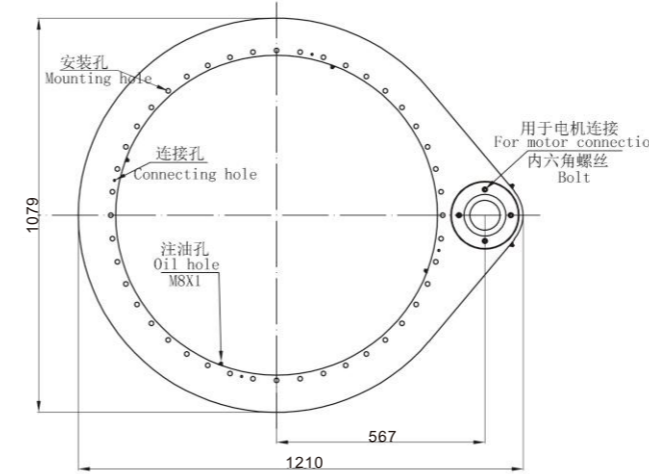


— 滚道曲线/Raceway curve
— 螺栓曲线/Bolt curve R p0.2
螺栓等级/Bolt class 10.9

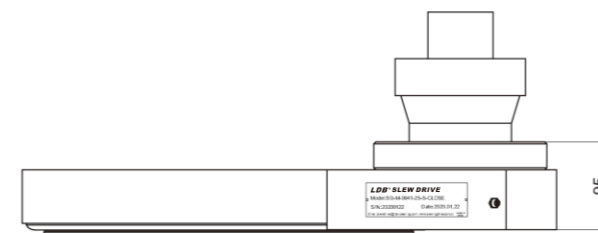
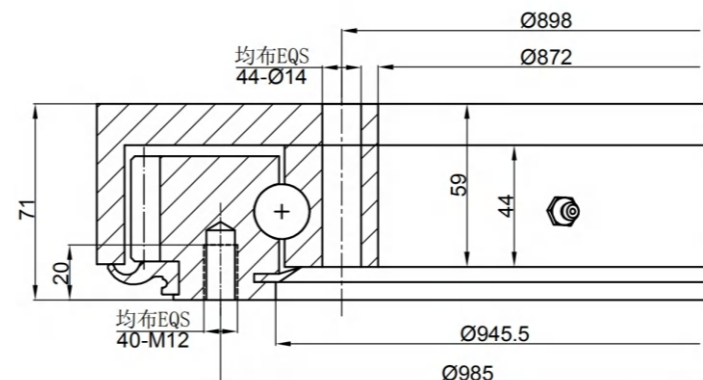
【SG-M系列】

SG-M Series

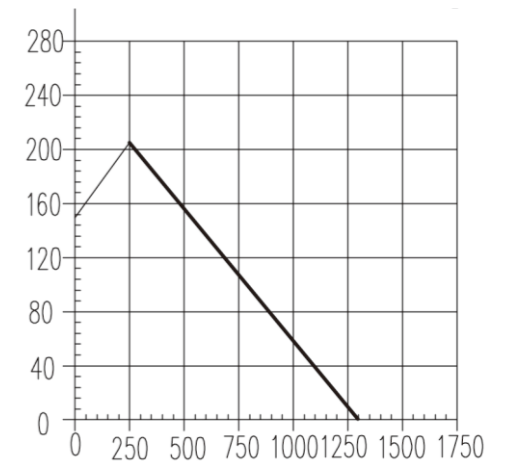
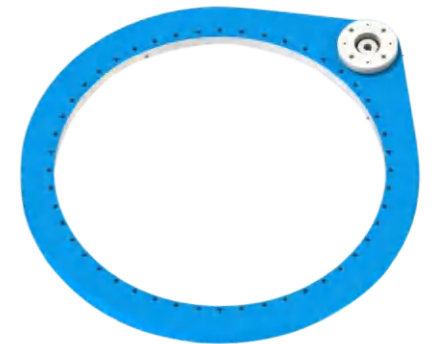
【SG-M-0941】



回转驱动的润滑
Lubrication of slewing drive
内径上有4个M8X1的注油嘴
4 M8X1 grease nipples on the inner ring
壳体两侧边有2个M8X1的注油嘴
2 M8X1 grease nipples on the housing
回转驱动应预先润滑
Slewing drive supplied pre-lubricated



模数/Module	m	[mm]	6
齿圈齿数/Teeth number of wheel	z2	[-]	174
小齿轮齿数/Teeth number of pinion	z1	[-]	15
总传动比/Overall gear ration	i	[-]	11.60
最大扭矩/Max torque	Md max	[Nm]	21029
标准扭矩/Nom torque SF=1 at n=5rpm	Md nom	[Nm]	16323
最大保持扭矩/Max holding torque	Mh	[Nm]	21029
径向额定静载荷/Radial static load	Co rad	[kN]	550
轴向额定静载荷/Axial static load	Co ax	[kN]	1286
径向额定动载荷/Radial dynamic load	Cr ad	[kN]	201
轴向额定动载荷/Axial dynamic load	Cax	[kN]	203
重量 (包括2-200液压马达的10KG)/Weight	P	[kg]	170
压力差/Pressure differential	Δ	[bar]	190
油流量/Oil flow	Q	[l/min]	51
输出转速/Output speed	n	[min-1]	5
最大可达扭矩/Max achievable torque	Md	[Nm]	21029

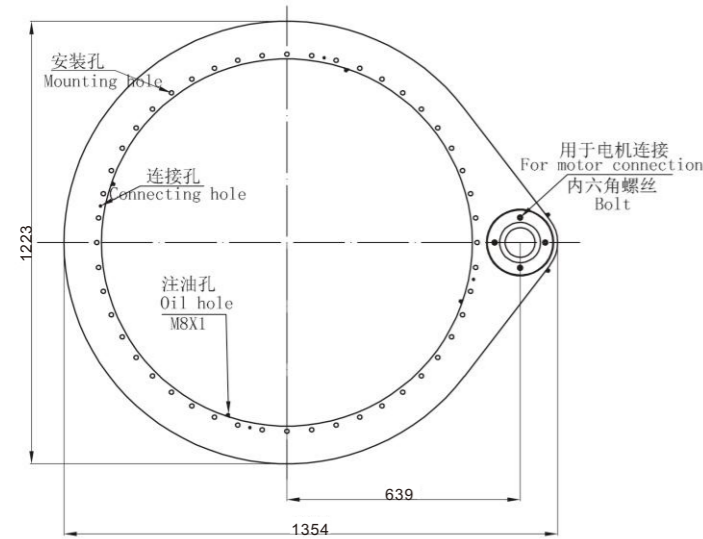


— 滚道曲线/Raceway curve
— 螺栓曲线/Bolt curve R p0.2
螺栓等级/Bolt class 10.9

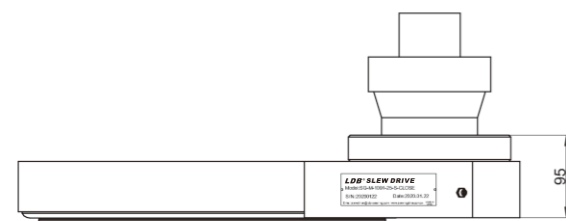
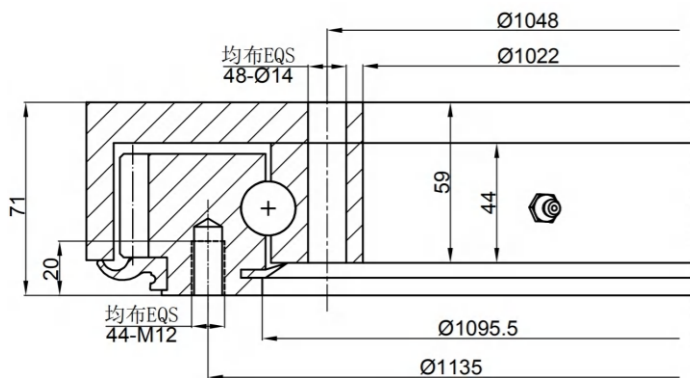
【SG-M系列】

SG-M Series

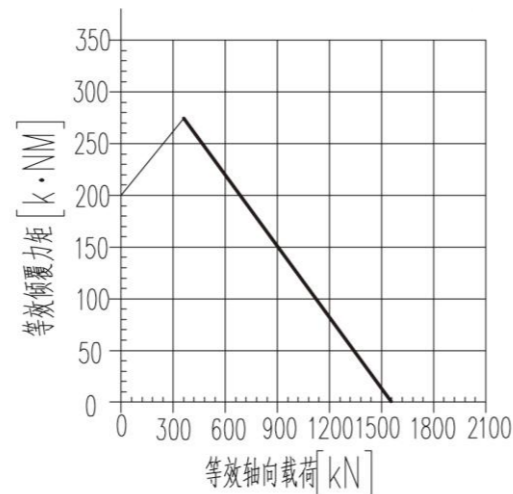
【SG-M-1091】



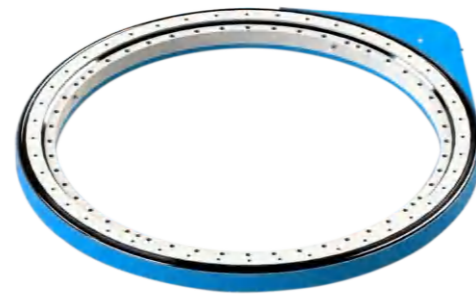
回转驱动的润滑
Lubrication of slewing drive
内径上有4个M8X1的注油嘴
4 M8X1 grease nipples on the inner ring
壳体两侧边有2个M8X1的注油嘴
2 M8X1 grease nipples on the housing
回转驱动应预先润滑
Slewing drive supplied pre-lubricated



模数/Module	m	[mm]	6
齿圈齿数/Teeth number of wheel	z2	[-]	198
小齿轮齿数/Teeth number of pinion	z1	[-]	15
总传动比/Overall gear ration	i	[-]	13.20
最大扭矩/Max torque	Md max	[Nm]	24207
标准扭矩/Nom torque SF=1 at n=5rpm	Md nom	[Nm]	18847
最大保持扭矩/Max holding torque	Mh	[Nm]	24207
径向额定静载荷/Radial static load	Co rad	[kN]	638
轴向额定静载荷/Axial static load	Co ax	[kN]	1492
径向额定动载荷/Radial dynamic load	Crad	[kN]	213
轴向额定动载荷/Axial dynamic load	Cax	[kN]	215
重量 (包括2-200液压马达的10KG)/Weight	P	[kg]	200
压力差/Pressure differential	Δ	[bar]	190
油流量/Oil flow	Q	[l/min]	62
输出转速/Output speed	n	[min-1]	5
最大可达扭矩/Max achievable torque	Md	[Nm]	24207



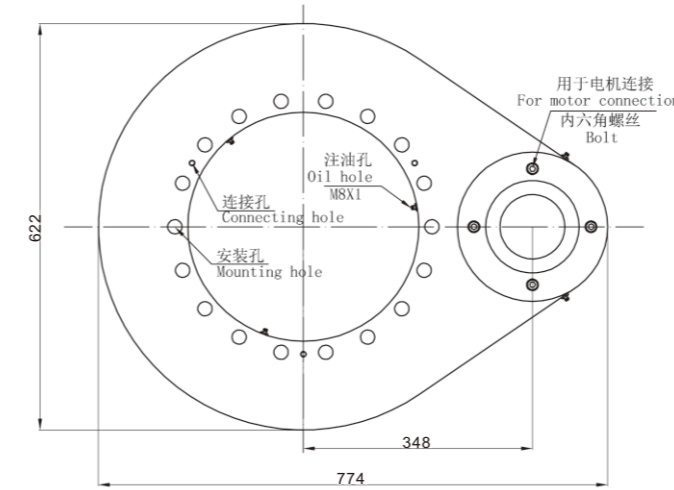
— 滚道曲线/Raceway curve
— 螺栓曲线/Bolt curve R p0.2
螺栓等级/Bolt class 10.9



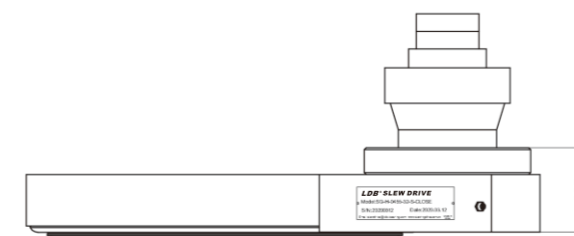
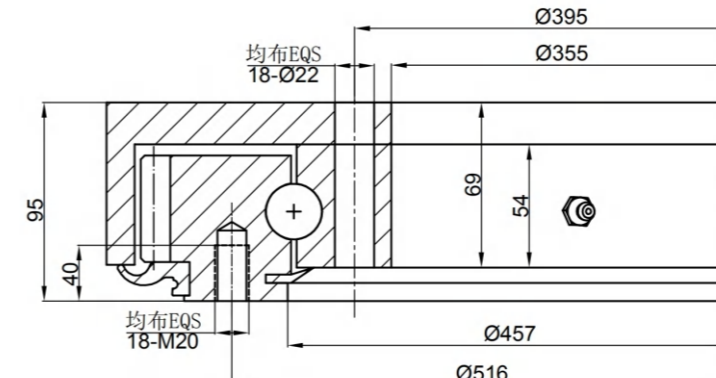
【SG-H系列】

SG-H Series

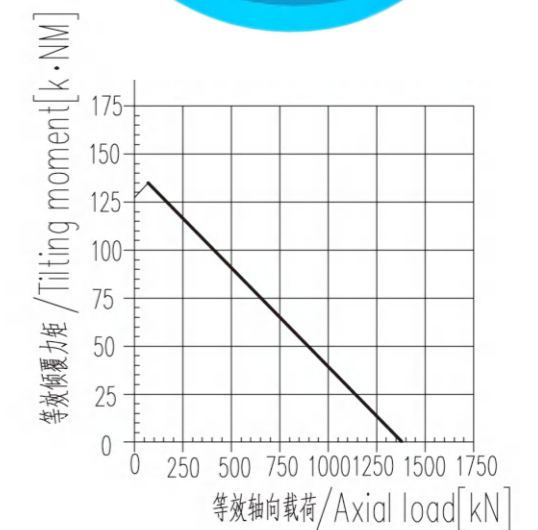
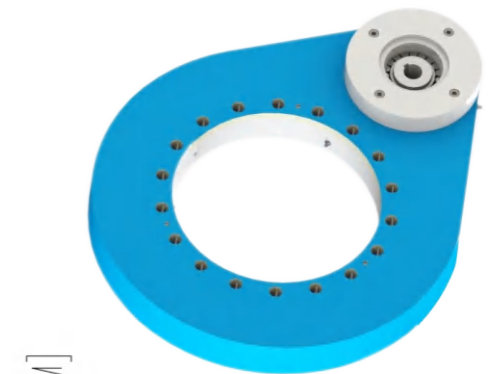
【SG-H-0455】



回转驱动的润滑
Lubrication of slewing drive
内径上有3个M8X1的注油嘴
3 M8X1 grease nipples on the inner ring
壳体两侧边有2个M8X1的注油嘴
2 M8X1 grease nipples on the housing
回转驱动应预先润滑
Slewing drive supplied pre-lubricated



模数/Module	m	[mm]	8
齿圈齿数/Teeth number of wheel	z2	[-]	72
小齿轮齿数/Teeth number of pinion	z1	[-]	15
总传动比/Overall gear ration	i	[-]	4.80
最大扭矩/Max torque	Md max	[Nm]	26289
标准扭矩/Nom torque SF=1 at n=3rpm	Md nom	[Nm]	17209
最大保持扭矩/Max holding torque	Mh	[Nm]	26289
径向额定静载荷/Radial static load	Co rad	[kN]	508
轴向额定静载荷/Axial static load	Co ax	[kN]	1360
径向额定动载荷/Radial dynamic load	Crad	[kN]	236
轴向额定动载荷/Axial dynamic load	Cax	[kN]	275
重量 (包括2-132液压马达的10KG)/Weight	P	[kg]	190
压力差/Pressure differential	Δ	[bar]	195
油流量/Oil flow	Q	[l/min]	38
输出转速/Output speed	n	[min-1]	3
最大可达扭矩/Max achievable torque	Md	[Nm]	26289

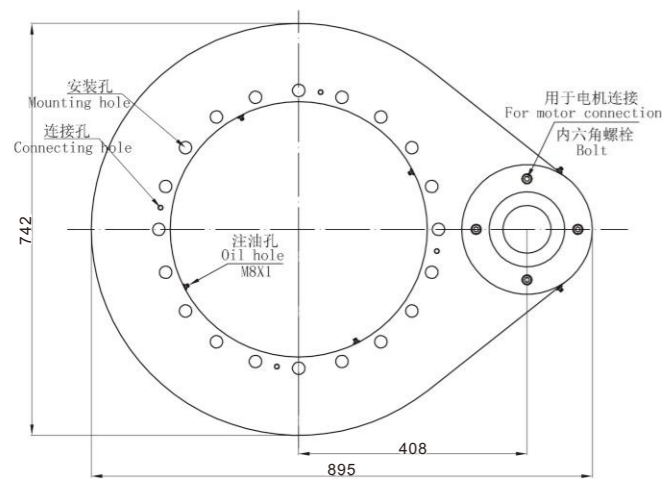


— 滚道曲线/Raceway curve
— 螺栓曲线/Bolt curve R p0.2
螺栓等级/Bolt class 10.9

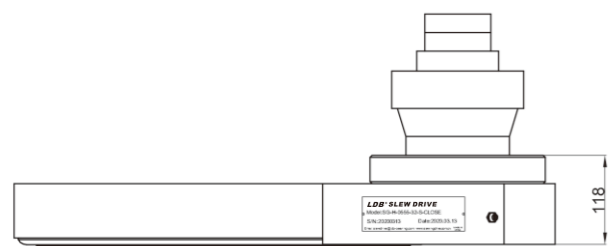
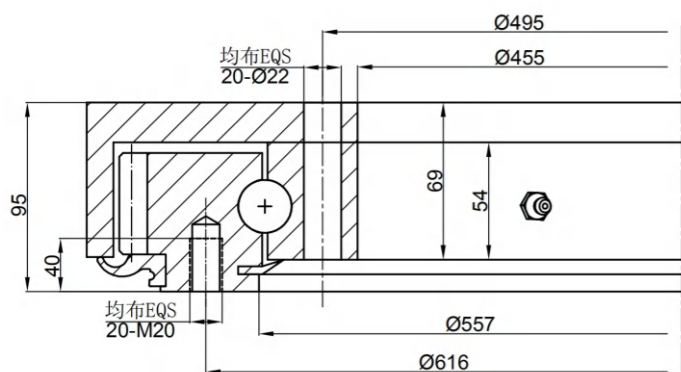
【SG-H系列】

SG-H Series

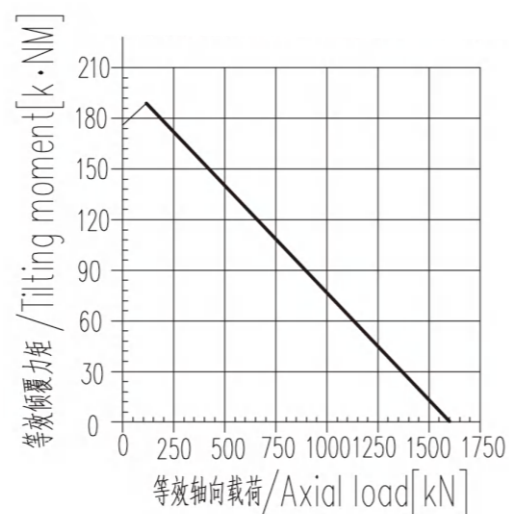
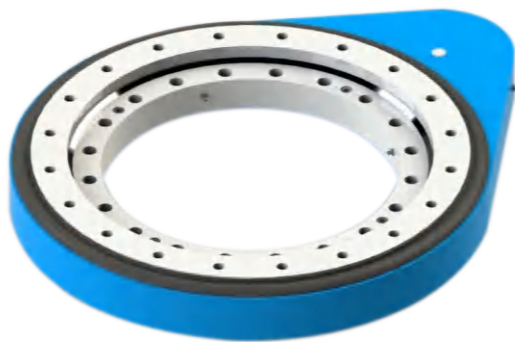
【SG-H-0555】



回转驱动的润滑
Lubrication of slewing drive
内径上有4个M8X1的注油嘴
4 M8X1 grease nipples on the inner ring
壳体两侧边有2个M8X1的注油嘴
2 M8X1 grease nipples on the housing
回转驱动应预先润滑
Slewing drive supplied pre-lubricated



模数/Module	m	[mm]	8
齿圈齿数/Teeth number of wheel	z2	[-]	87
小齿轮齿数/Teeth number of pinion	z1	[-]	15
总传动比/Overall gear ration	i	[-]	5.80
最大扭矩/Max torque	Md max	[Nm]	31036
标准扭矩/Nom torque SF=1 at n=3rpm	Md nom	[Nm]	20510
最大保持扭矩/Max holding torque	Mh	[Nm]	31036
径向额定静载荷/Radial static load	Co rad	[kN]	619
轴向额定静载荷/Axial static load	Co ax	[kN]	1658
径向额定动载荷/Radial dynamic load	C rad	[kN]	253
轴向额定动载荷/Axial dynamic load	C ax	[kN]	296
重量 (包括2-132液压马达的10KG)/Weight	P	[kg]	215
压力差/Pressure differential	Δ	[bar]	195
油流量/Oil flow	Q	[l/min]	45
输出转速/Output speed	n	[min-1]	3
最大可达扭矩/Max achievable torque	Md	[Nm]	31036

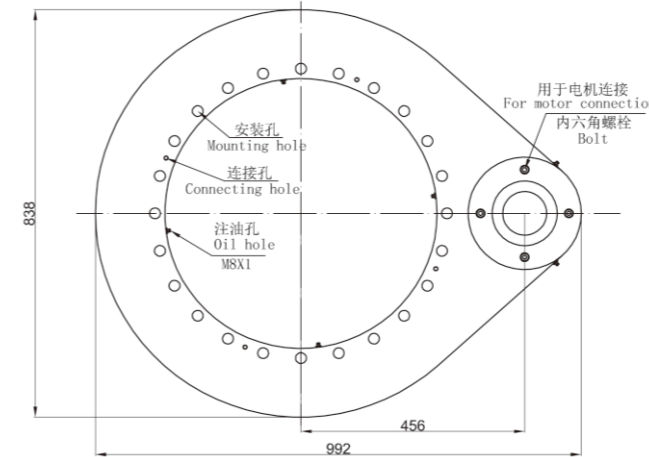


— 滚道曲线/Raceway curve
— 螺栓曲线/Bolt curve R p0.2
螺栓等级/Bolt class 10.9

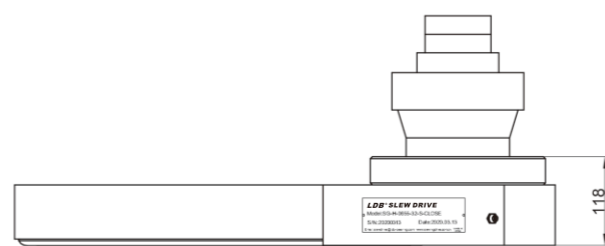
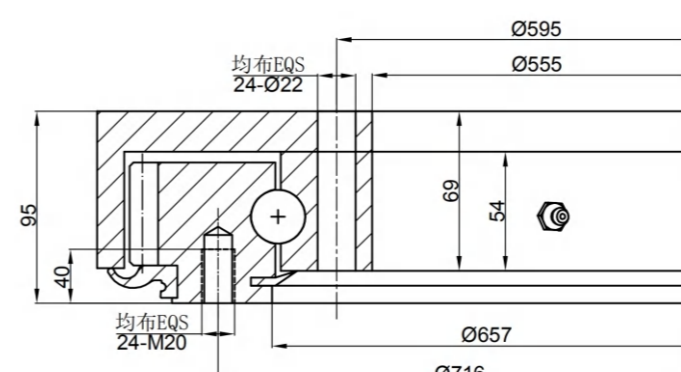
【SG-H系列】

SG-H Series

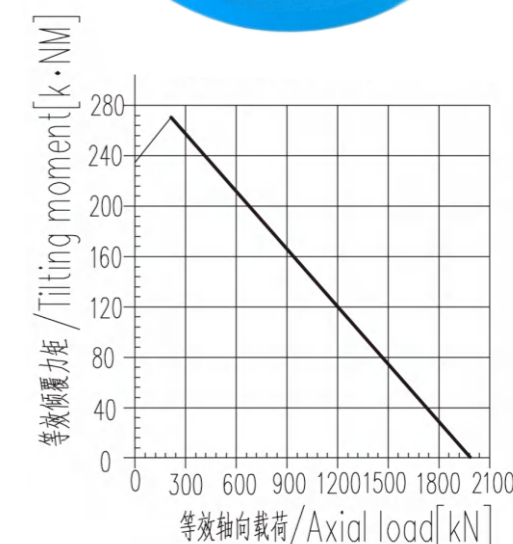
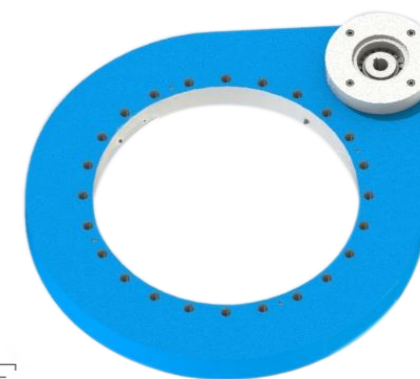
【SG-H-0655】



回转驱动的润滑
Lubrication of slewing drive
内径上有4个M8X1的注油嘴
4 M8X1 grease nipples on the inner ring
壳体两侧边有2个M8X1的注油嘴
2 M8X1 grease nipples on the housing
回转驱动应预先润滑
Slewing drive supplied pre-lubricated



模数/Module	m	[mm]	8
齿圈齿数/Teeth number of wheel	z2	[-]	99
小齿轮齿数/Teeth number of pinion	z1	[-]	15
总传动比/Overall gear ration	i	[-]	6.60
最大扭矩/Max torque	Md max	[Nm]	35783
标准扭矩/Nom torque SF=1 at n=3rpm	Md nom	[Nm]	23795
最大保持扭矩/Max holding torque	Mh	[Nm]	35783
径向额定静载荷/Radial static load	Co rad	[kN]	731
轴向额定静载荷/Axial static load	Co ax	[kN]	1957
径向额定动载荷/Radial dynamic load	C rad	[kN]	269
轴向额定动载荷/Axial dynamic load	C ax	[kN]	314
重量 (包括2-132液压马达的10KG)/Weight	P	[kg]	245
压力差/Pressure differential	Δ	[bar]	195
油流量/Oil flow	Q	[l/min]	52
输出转速/Output speed	n	[min-1]	3
最大可达扭矩/Max achievable torque	Md	[Nm]	35783

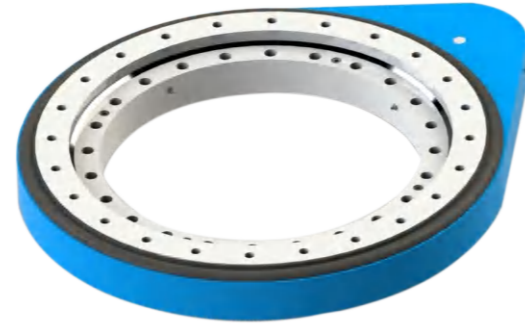
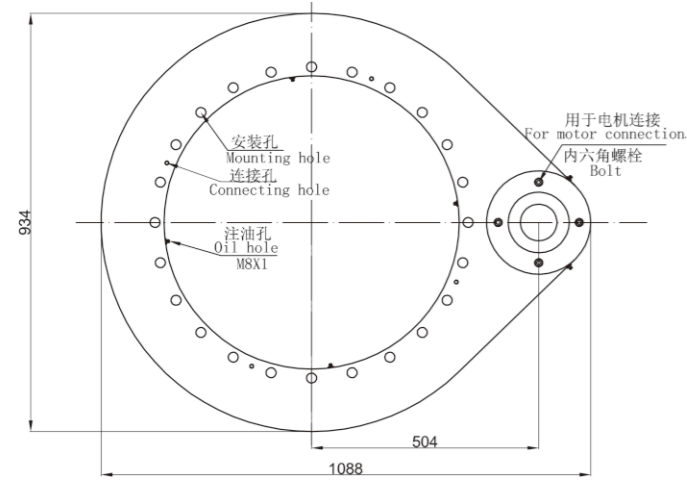


— 滚道曲线/Raceway curve
— 螺栓曲线/Bolt curve R p0.2
螺栓等级/Bolt class 10.9

【SG-H系列】

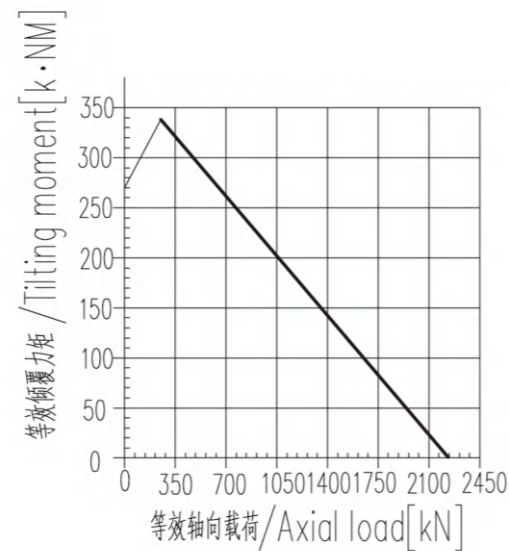
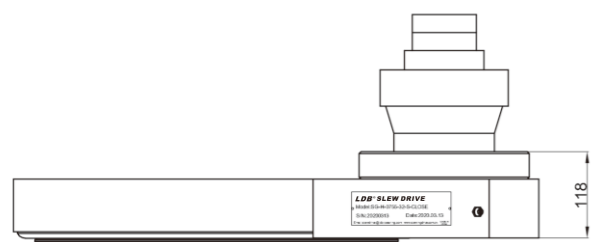
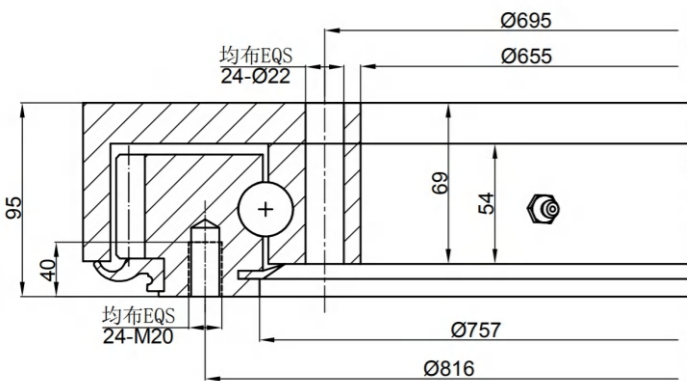
SG-H Series

【SG-H-0755】



模数/Module	m	[mm]	8
齿圈齿数/Teeth number of wheel	z2	[-]	111
小齿轮齿数/Teeth number of pinion	z1	[-]	15
总传动比/Overall gear ration	i	[-]	7.40
最大扭矩/Max torque	Md max	[Nm]	40165
标准扭矩/Nom torque SF=1 at n=3rpm	Md nom	[Nm]	26793
最大保持扭矩/Max holding torque	Mh	[Nm]	40165
径向额定静载荷/Radial static load	Co rad	[kN]	843
轴向额定静载荷/Axial static load	Co ax	[kN]	2257
径向额定动载荷/Radial dynamic load	Crad	[kN]	284
轴向额定动载荷/Axial dynamic load	Cax	[kN]	331
重量 (包括2-132液压马达的10KG)/Weight	P	[kg]	265
压力差/Pressure differential	Δ	[bar]	195
油流量/Oil flow	Q	[l/min]	57
输出转速/Output speed	n	[min-1]	3
最大可达扭矩/Max achievable torque	Md	[Nm]	40165

回转驱动的润滑
Lubrication of slewing drive
内径上有4个M8X1的注油嘴
4 M8X1 grease nipples on the inner ring
壳体两侧边有2个M8X1的注油嘴
2 M8X1 grease nipples on the housing
回转驱动应预先润滑
Slewing drive supplied pre-lubricated

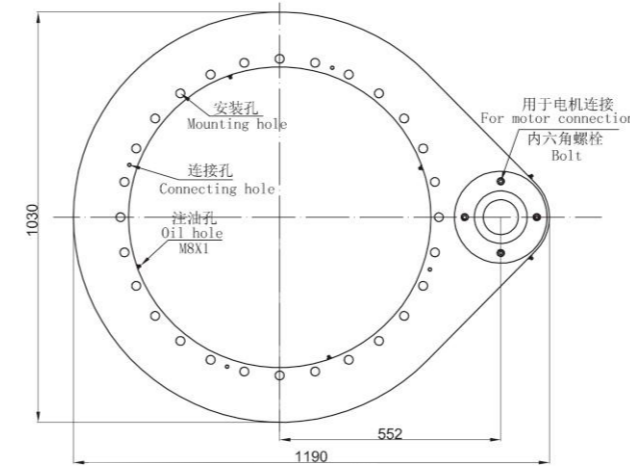


— 滚道曲线/Raceway curve
- - 螺栓曲线/Bolt curve R p0.2
螺栓等级/Bolt class 10.9

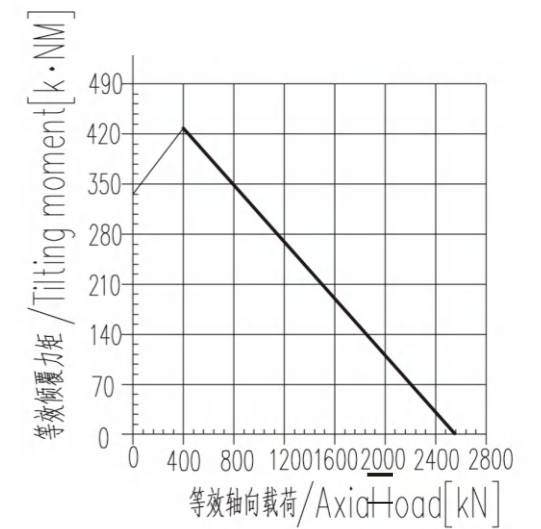
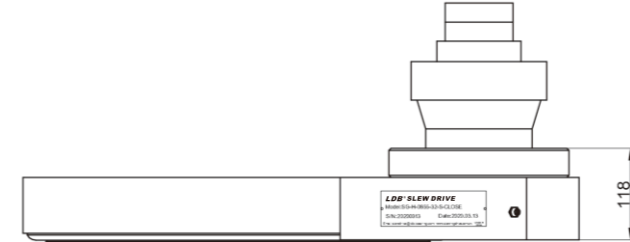
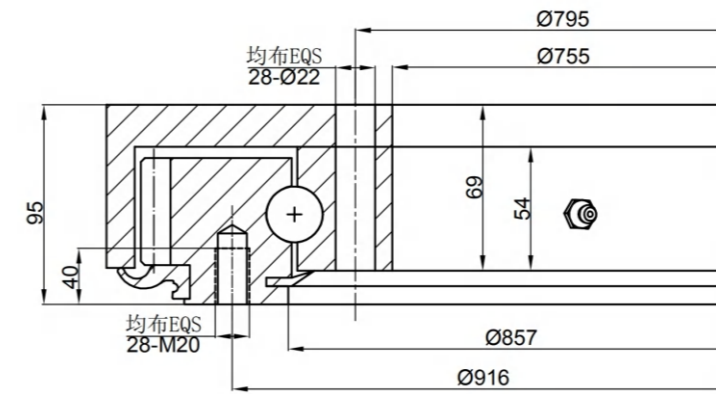
【SG-H系列】

SG-H Series

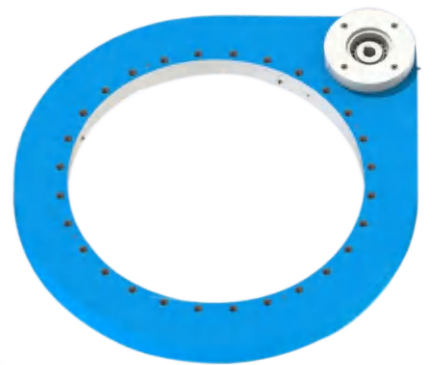
【SG-H-0855】



回转驱动的润滑
Lubrication of slewing drive
内径上有4个M8X1的注油嘴
4 M8X1 grease nipples on the inner ring
壳体两侧边有2个M8X1的注油嘴
2 M8X1 grease nipples on the housing
回转驱动应预先润滑
Slewing drive supplied pre-lubricated



— 滚道曲线/Raceway curve
- - 螺栓曲线/Bolt curve R p0.2
螺栓等级/Bolt class 10.9

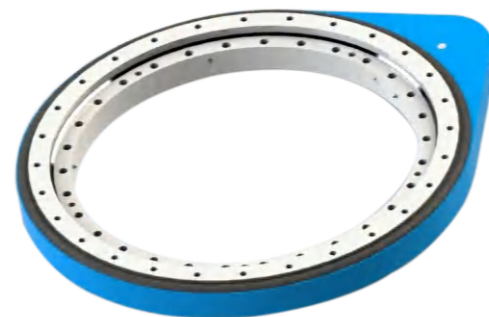
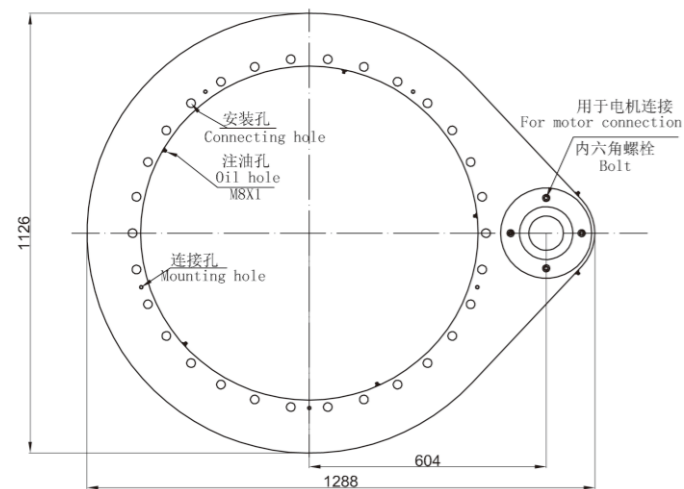


模数/Module	m	[mm]	8
齿圈齿数/Teeth number of wheel	z2	[-]	123
小齿轮齿数/Teeth number of pinion	z1	[-]	15
总传动比/Overall gear ration	i	[-]	8.20
最大扭矩/Max torque	Md max	[Nm]	44821
标准扭矩/Nom torque SF=1 at n=3rpm	Md nom	[Nm]	31111
最大保持扭矩/Max holding torque	Mh	[Nm]	44821
径向额定静载荷/Radial static load	Co rad	[kN]	954
轴向额定静载荷/Axial static load	Co ax	[kN]	2556
径向额定动载荷/Radial dynamic load	Crad	[kN]	299
轴向额定动载荷/Axial dynamic load	Cax	[kN]	349
重量 (包括2-132液压马达的10KG)/Weight	P	[kg]	295
压力差/Pressure differential	Δ	[bar]	195
油流量/Oil flow	Q	[l/min]	64
输出转速/Output speed	n	[min-1]	3
最大可达扭矩/Max achievable torque	Md	[Nm]	44821

【SG-H系列】

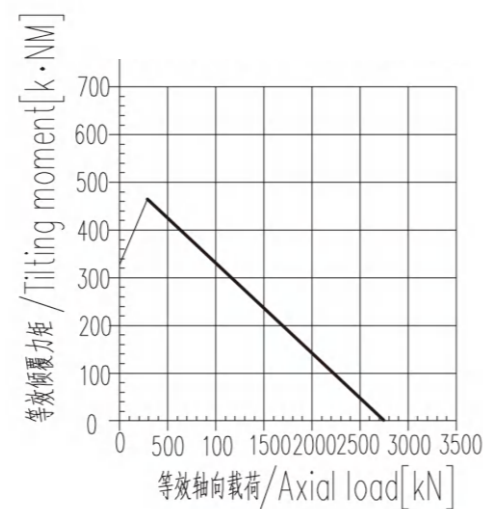
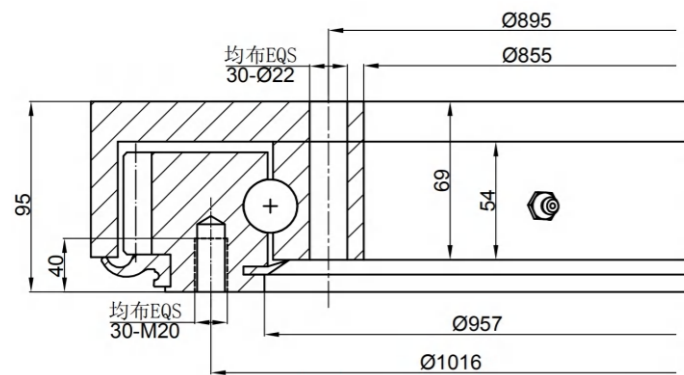
SG-H Series

【SG-H-0955】



模数/Module	m	[mm]	8
齿圈齿数/Teeth number of wheel	z2	[-]	135
小齿轮齿数/Teeth number of pinion	z1	[-]	15
总传动比/Overall gear ration	i	[-]	9
最大扭矩/Max torque	Md max	[Nm]	49293
标准扭矩/Nom torque SF=1 at n=3rpm	Md nom	[Nm]	34524
最大保持扭矩/Max holding torque	Mh	[Nm]	49293
径向额定静载荷/Radial static load	Co rad	[kN]	1066
轴向额定静载荷/Axial static load	Co ax	[kN]	2855
径向额定动载荷/Radial dynamic load	C rad	[kN]	311
轴向额定动载荷/Axial dynamic load	C ax	[kN]	363
重量 (包括2-132液压马达的10KG)/Weight	P	[kg]	320
压力差/Pressure differential	Δ	[bar]	195
油流量/Oil flow	Q	[l/min]	70
输出转速/Output speed	n	[min-1]	3
最大可达扭矩/Max achievable torque	Md	[Nm]	49293

回转驱动的润滑
Lubrication of slewing drive
内径上有4个M8X1的注油嘴
4 M8X1 grease nipples on the inner ring
壳体两侧边有2个M8X1的注油嘴
2 M8X1 grease nipples on the housing
回转驱动应预先润滑
Slewing drive supplied pre-lubricated

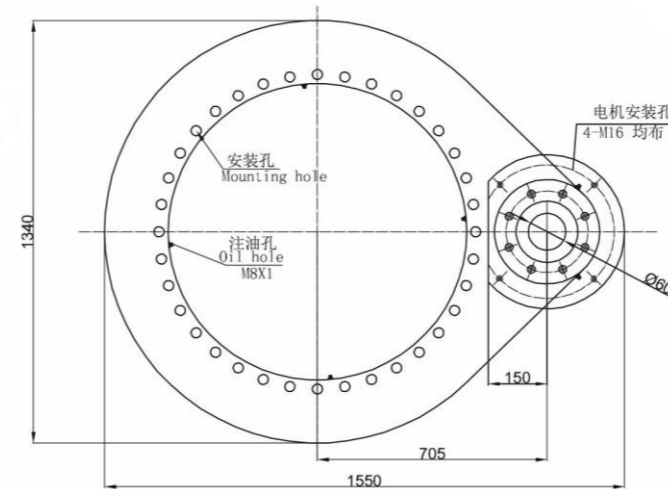


— 滚道曲线/Raceway curve
— 螺栓曲线/Bolt curve R p0.2
螺栓等级/Bolt class 10.9

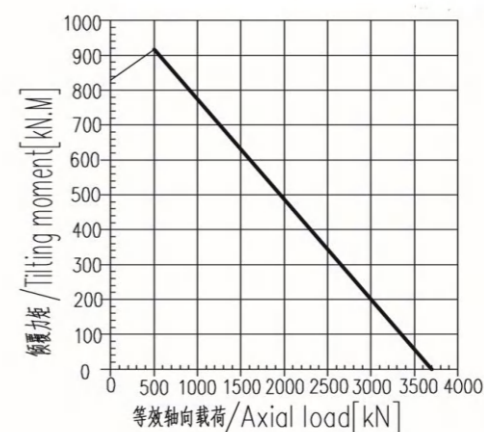
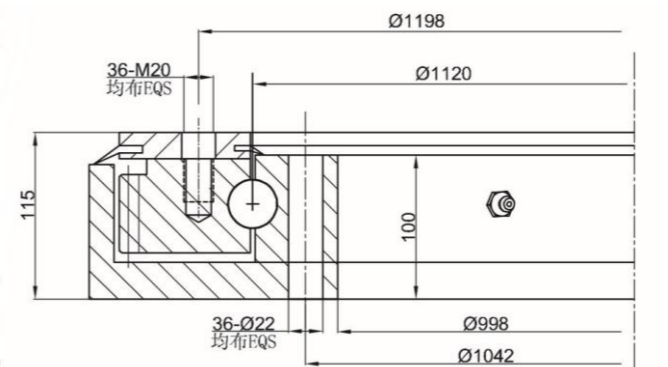
【SG-H系列】

SG-H Series

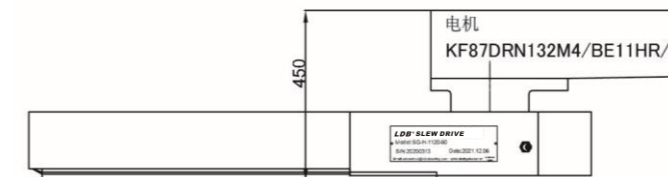
【SG-H-1120】



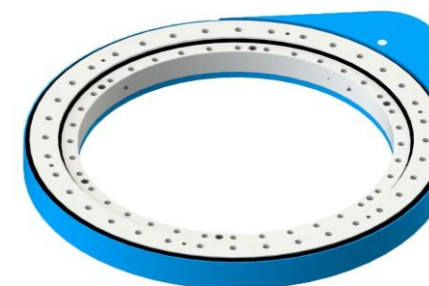
回转驱动的润滑
Lubrication of slewing drive
内径上有4个M8X1的注油嘴
4 M8X1 grease nipples on the inner ring
壳体两侧边有2个M8X1的注油嘴
2 M8X1 grease nipples on the housing
回转驱动应预先润滑
Slewing drive supplied pre-lubricated



— 滚道曲线/Raceway curve
— 螺栓曲线/Bolt curve R p0.2
螺栓等级/Bolt class 10.9



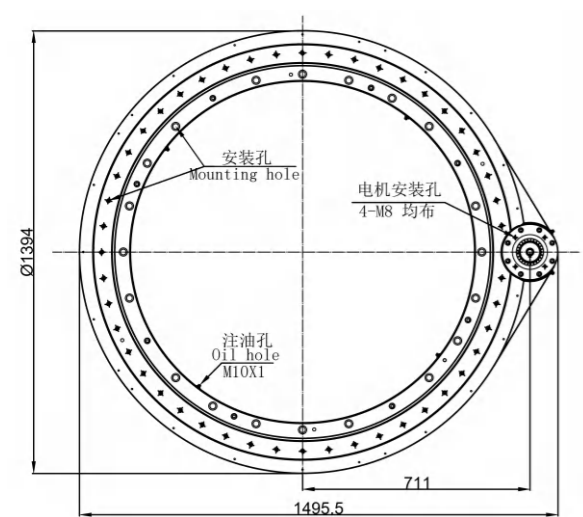
模数/Module	m	[mm]	6
齿圈齿数/Teeth number of wheel	z2	[-]	215
小齿轮齿数/Teeth number of pinion	z1	[-]	20
总传动比/Overall gear ration	i	[-]	10.75
最大扭矩/Max torque	Md max	[Nm]	59000
标准扭矩/Nom torque SF=1 at n=3rpm	Md nom	[Nm]	39000
最大保持扭矩/Max holding torque	Mh	[Nm]	59000
径向额定静载荷/Radial static load	Co rad	[kN]	1053
轴向额定静载荷/Axial static load	Co ax	[kN]	3700
径向额定动载荷/Radial dynamic load	C rad	[kN]	355
轴向额定动载荷/Axial dynamic load	C ax	[kN]	413
输出转速/Output speed	n	[min-1]	0.5~2
最大可达扭矩/Max achievable torque	Md	[Nm]	59000



【SG-H系列】

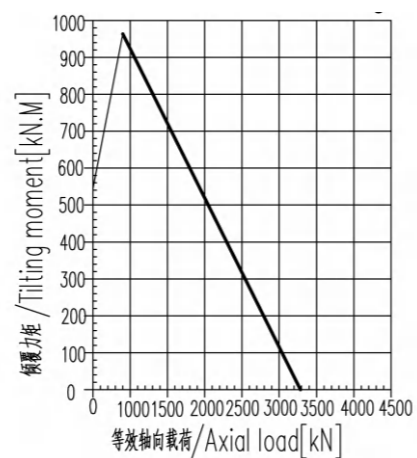
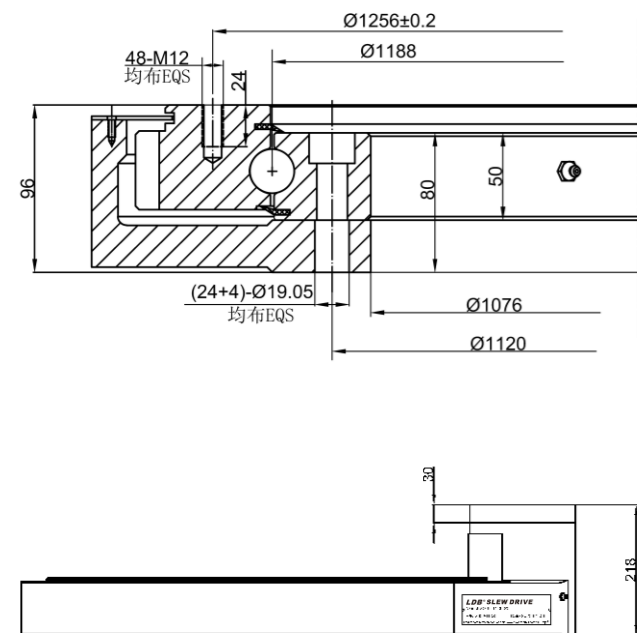
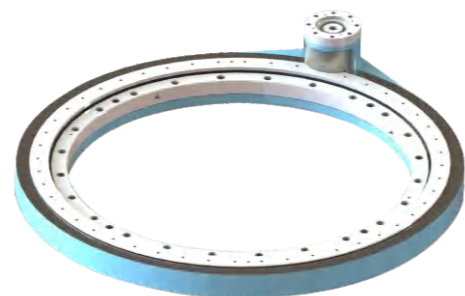
SG-H Series

【SG-H-1188】



模数/Module	m	[mm]	6
齿圈齿数/Teeth number of wheel	z2	[-]	222
小齿轮齿数/Teeth number of pinion	z1	[-]	15
总传动比/Overall gear ration	i	[-]	14.8
最大扭矩/Max torque	Md max	[Nm]	27838
标准扭矩/Nom torque SF=1 at n=3rpm	Md nom	[Nm]	21674
最大保持扭矩/Max holding torque	Mh	[Nm]	27838
径向额定静载荷/Radial static load	Co rad	[kN]	1095
轴向额定静载荷/Axial static load	Co ax	[kN]	3285
径向额定动载荷/Radial dynamic load	C rad	[kN]	547.5
轴向额定动载荷/Axial dynamic load	C ax	[kN]	1314
输出转速/Output speed	n	[min ⁻¹]	0.5~2
最大可达扭矩/Max achievable torque	Md	[Nm]	27838

回转驱动的润滑
Lubrication of slewing drive
内径上有4个M10X1的注油嘴
4 M10X1 grease nipples on the inner ring
壳体两侧边有2个M10X1的注油嘴
2 M10X1 grease nipples on the housing
回转驱动应预先润滑
Slewing drive supplied pre-lubricated

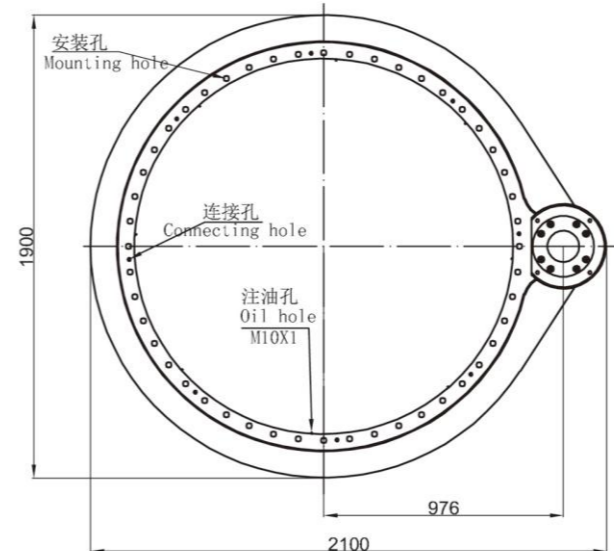


— 滚道曲线/Raceway curve
— 螺栓曲线/Bolt curve R p0.2
螺栓等级/Bolt class 10.9

【SG-M系列】

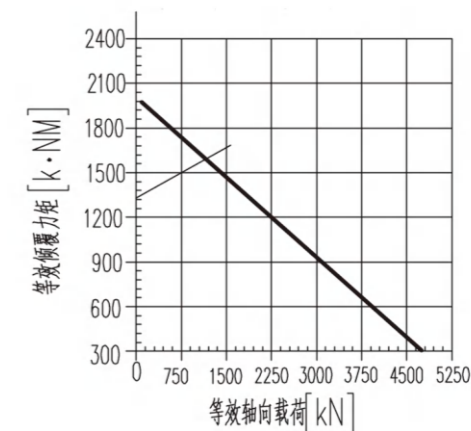
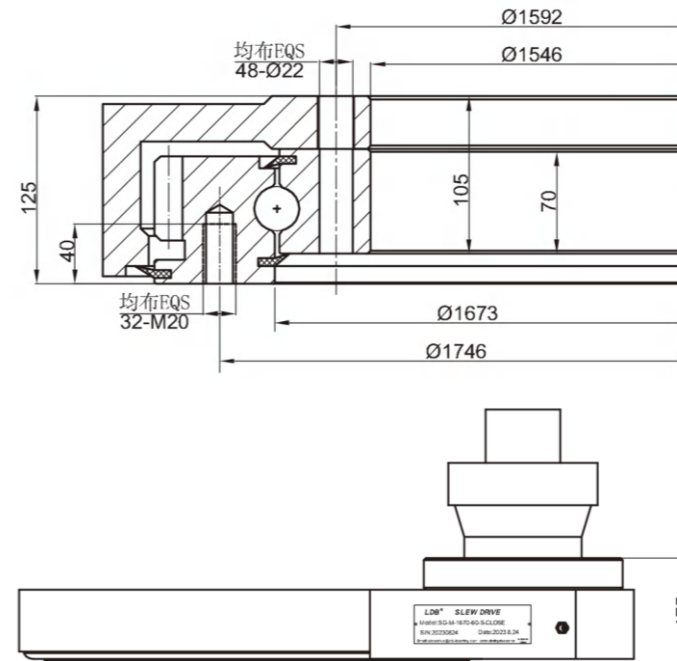
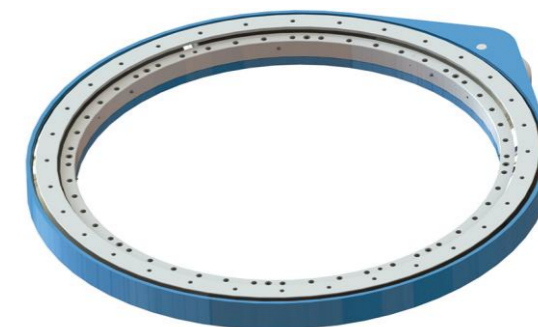
SG-M Series

【SG-M-1670】



模数/Module	m	[mm]	8
齿圈齿数/Teeth number of wheel	z2	[-]	227
小齿轮齿数/Teeth number of pinion	z1	[-]	17
总传动比/Overall gear ration	i	[-]	13.35
最大扭矩/Max torque	Md max	[Nm]	33405
标准扭矩/Nom torque	Md nom	[Nm]	23383
最大保持扭矩/Max holding torque	Mh	[Nm]	33405
径向额定静载荷/Radial static load	Co rad	[kN]	1687
轴向额定静载荷/Axial static load	Co ax	[kN]	4728
径向额定动载荷/Radial dynamic load	C rad	[kN]	253
轴向额定动载荷/Axial dynamic load	C ax	[kN]	709
输出转速/Output speed	n	[min ⁻¹]	2.5~10
最大可达扭矩/Max achievable torque	Md	[Nm]	33405

回转驱动的润滑
Lubrication of slewing drive
内径上有8个M10X1的注油嘴
8 M10X1 grease nipples on the inner ring
壳体两侧边有2个M10X1的注油嘴
2 M10X1 grease nipples on the housing
回转驱动应预先润滑
Slewing drive supplied pre-lubricated



— 滚道曲线/Raceway curve
— 螺栓曲线/Bolt curve R p0.2
螺栓等级/Bolt class 10.9

【特殊定制】

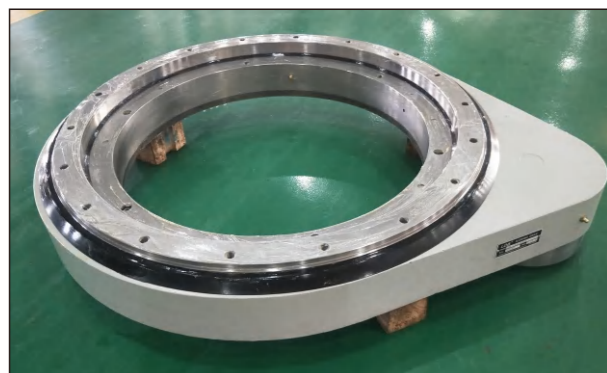
Special Customization



双齿轮高精度
Double gear high precision



配套行星减速机及马达
Matched planetary reducer and motor



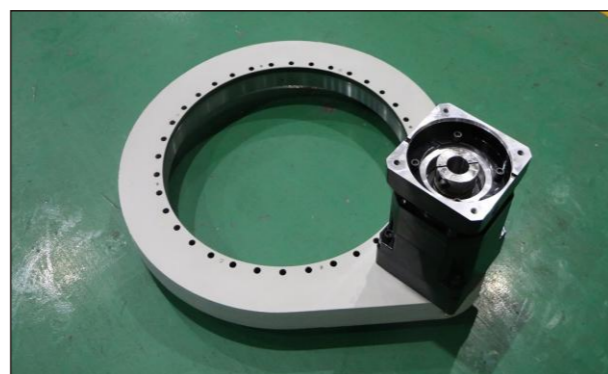
大承载, 大输出扭矩
Large load, large output torque



内齿, 全防护
Internal gear, full protection



重载 大轴径
Heavy load large axle diameter



定制减速机接口
Customized reducer interface

- ◆定制双齿轮高精度, 负游隙精密型斜齿 (磨齿)回转驱动, 为客户实现零回程间隙。
- ◆定制非标高精度直齿 (磨齿)回转驱动, 为客户配套行星减速机及马达。
- ◆定制大承载, 大输出扭矩, 精密型斜齿 (磨齿)回转驱动, 为客户解决了机床转台承载问题。
- ◆定制内齿, 全防护, 集成安装基板, 为客户减小设备体积, 节约成本, 节省安装调试时间。
- ◆ Customized double-gear high precision, negative clearance precision helical gear(gear grinding) slewing drive to achieve zero return clearance for customers.
- ◆ Customized non-standard high precision spur gear (gear grinding) slewing drive, provide matching planetary reducer and motor for customers.
- ◆ Customized large load, large output torque, precision helical gear(gear grinding) slewing drive, help customers to solve the load problem of machine tool rotary table.
- ◆ Customized internal gear, full protection, integrated installation substrate, help customers to reduce the size of equipment, save costs, save the installation and debugging time.